

ENO2 antibody - middle region
Rabbit Polyclonal Antibody
Catalog # AI14564

Specification

ENO2 antibody - middle region - Product Information

Application	WB
Primary Accession	P09104
Other Accession	NM_001975 , NP_001966
Reactivity	Human, Mouse, Rat, Rabbit, Goat, Sheep, Horse, Bovine, Guinea Pig, Dog
Predicted	Human, Mouse, Rabbit, Chicken, Horse, Bovine, Guinea Pig
Host	Rabbit
Clonality	Polyclonal
Calculated MW	47kDa KDa

ENO2 antibody - middle region - Additional Information

Gene ID 2026

Alias Symbol	NSE
Other Names	
Gamma-enolase, 4.2.1.11, 2-phospho-D-glycerate hydro-lyase, Enolase 2, Neural enolase, Neuron-specific enolase, NSE, ENO2	

Format

Liquid. Purified antibody supplied in 1x PBS buffer with 0.09% (w/v) sodium azide and 2% sucrose.

Reconstitution & Storage

Add 50 ul of distilled water. Final anti-ENO2 antibody concentration is 1 mg/ml in PBS buffer with 2% sucrose. For longer periods of storage, store at 20°C. Avoid repeat freeze-thaw cycles.

Precautions

ENO2 antibody - middle region is for research use only and not for use in diagnostic or therapeutic procedures.

ENO2 antibody - middle region - Protein Information

Name ENO2

Function

Has neurotrophic and neuroprotective properties on a broad spectrum of central nervous system (CNS) neurons. Binds, in a calcium- dependent manner, to cultured neocortical neurons and promotes cell survival (By similarity).

Cellular Location

Cytoplasm. Cell membrane. Note=Can translocate to the plasma membrane in either the

homodimeric (alpha/alpha) or heterodimeric (alpha/gamma) form

Tissue Location

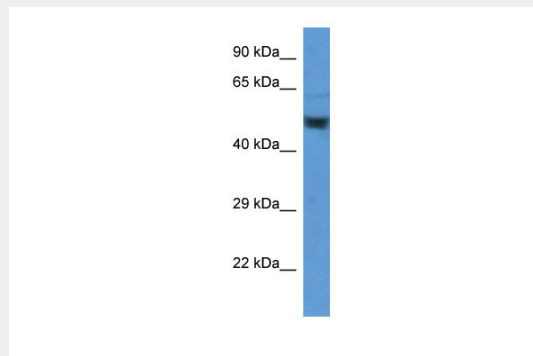
The alpha/alpha homodimer is expressed in embryo and in most adult tissues. The alpha/beta heterodimer and the beta/beta homodimer are found in striated muscle, and the alpha/gamma heterodimer and the gamma/gamma homodimer in neurons

ENO2 antibody - middle region - Protocols

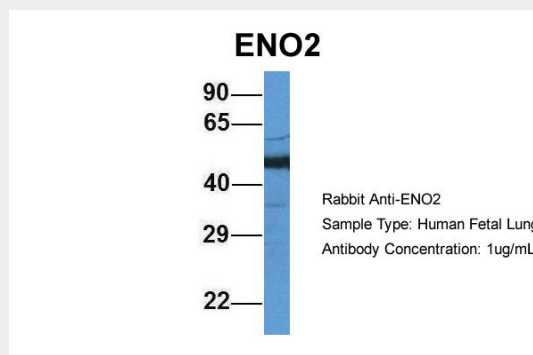
Provided below are standard protocols that you may find useful for product applications.

- [Western Blot](#)
- [Blocking Peptides](#)
- [Dot Blot](#)
- [Immunohistochemistry](#)
- [Immunofluorescence](#)
- [Immunoprecipitation](#)
- [Flow Cytometry](#)
- [Cell Culture](#)

ENO2 antibody - middle region - Images



WB Suggested Anti-ENO2 Antibody Titration: 1.0 µg/ml
Positive Control: Placenta



Host:Rabbit
Target Name:ENO2
Sample Tissue:Human Fetal Lung
Antibody Dilution: 1.0µg/ml

ENO2 antibody - middle region - References

McAleese S.M.,et al.Eur. J. Biochem. 178:413-417(1988).
van Obberghen E.,et al.J. Neurosci. Res. 19:450-456(1988).
Oliva D.,et al.Gene 79:355-360(1989).
Oliva D.,et al.Genomics 10:157-165(1991).
Ansari-Lari M.A.,et al.Genome Res. 7:268-280(1997).