

**CTAG1B Antibody - middle region**  
**Rabbit Polyclonal Antibody**  
**Catalog # AI14559**

**Specification**

---

**CTAG1B Antibody - middle region - Product Information**

Application	<b>WB</b>
Primary Accession	<a href="#">P78358</a>
Other Accession	<a href="#">NM_001327</a> , <a href="#">NP_001318</a>
Reactivity	<b>Human</b>
Predicted	<b>Human</b>
Host	<b>Rabbit</b>
Clonality	<b>Polyclonal</b>
Calculated MW	<b>18kDa KDa</b>

**CTAG1B Antibody - middle region - Additional Information**

**Gene ID** 1485;246100

**Alias Symbol** **CT6.1, CTAG, CTAG1, CTAG1A, ESO1, LAGE-2, LAGE2B, NY-ESO-1**

**Other Names**

Cancer/testis antigen 1, Autoimmunogenic cancer/testis antigen NY-ESO-1, Cancer/testis antigen 6.1, CT6.1, L antigen family member 2, LAGE-2, CTAG1A, CTAG, CTAG1, ESO1, LAGE2, LAGE2A

**Format**

Liquid. Purified antibody supplied in 1x PBS buffer with 0.09% (w/v) sodium azide and 2% sucrose.

**Reconstitution & Storage**

Add 50 ul of distilled water. Final anti-CTAG1B antibody concentration is 1 mg/ml in PBS buffer with 2% sucrose. For longer periods of storage, store at 20°C. Avoid repeat freeze-thaw cycles.

**Precautions**

CTAG1B Antibody - middle region is for research use only and not for use in diagnostic or therapeutic procedures.

**CTAG1B Antibody - middle region - Protein Information**

**Name** CTAG1A

**Synonyms** CTAG, CTAG1, ESO1, LAGE2, LAGE2A

**Cellular Location**

Cytoplasm.

**Tissue Location**

Expressed in testis and ovary and in a wide variety of cancers. Detected in uterine myometrium. Expressed from 18 weeks until birth in human fetal testis. In the adult testis, is strongly expressed

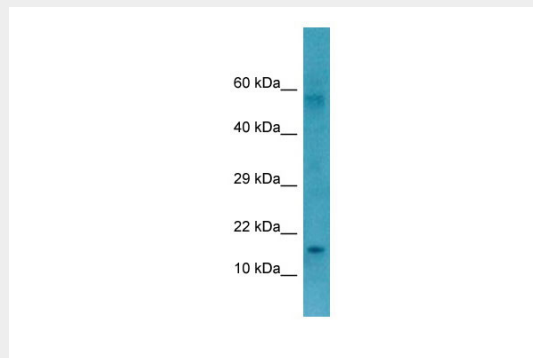
in spermatogonia and in primary spermatocytes, but not in post-meiotic cells or in testicular somatic cells (at protein level)

### **CTAG1B Antibody - middle region - Protocols**

Provided below are standard protocols that you may find useful for product applications.

- [Western Blot](#)
- [Blocking Peptides](#)
- [Dot Blot](#)
- [Immunohistochemistry](#)
- [Immunofluorescence](#)
- [Immunoprecipitation](#)
- [Flow Cytometry](#)
- [Cell Culture](#)

### **CTAG1B Antibody - middle region - Images**



WB Suggested Anti-CTAG1B Antibody Titration: 1.0 µg/ml  
Positive Control: Fetal Stomach

### **CTAG1B Antibody - middle region - References**

- Chen Y.-T., et al. Proc. Natl. Acad. Sci. U.S.A. 94:1914-1918(1997).  
Lethe B.G., et al. Int. J. Cancer 76:903-908(1998).  
Wang R.-F., et al. J. Immunol. 161:3598-3606(1998).  
De Smet C., et al. Mol. Cell. Biol. 19:7327-7335(1999).  
Aradhya S., et al. Hum. Mol. Genet. 10:2557-2567(2001).