

IL32 Antibody - middle region
Rabbit Polyclonal Antibody
Catalog # AI14557**Specification**

IL32 Antibody - middle region - Product Information

Application	WB
Primary Accession	P24001
Reactivity	Human
Host	Rabbit
Clonality	Polyclonal
Calculated MW	25kDa KDa

IL32 Antibody - middle region - Additional Information**Gene ID** 9235**Alias Symbol** **Name=IL32,**
Other Names

Interleukin-32, IL-32, Natural killer cells protein 4, Tumor necrosis factor alpha-inducing factor, IL32, NK4, TAIF

Format

Liquid. Purified antibody supplied in 1x PBS buffer with 0.09% (w/v) sodium azide and 2% sucrose.

Reconstitution & StorageAdd 50 μ l of distilled water. Final Anti-IL32 antibody concentration is 1 mg/ml in PBS buffer with 2% sucrose. For longer periods of storage, store at -20°C. Avoid repeat freeze-thaw cycles.**Precautions**

IL32 Antibody - middle region is for research use only and not for use in diagnostic or therapeutic procedures.

IL32 Antibody - middle region - Protein Information**Name** IL32**Synonyms** NK4, TAIF**Function**

Cytokine that may play a role in innate and adaptive immune responses. It induces various cytokines such as TNFA/TNF-alpha and IL8. It activates typical cytokine signal pathways of NF-kappa-B and p38 MAPK.

Cellular Location

Secreted.

Tissue Location

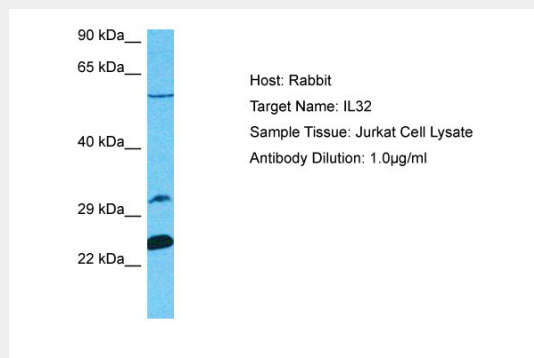
Selectively expressed in lymphocytes. Expression is more prominent in immune cells than in non-immune cells

IL32 Antibody - middle region - Protocols

Provided below are standard protocols that you may find useful for product applications.

- [Western Blot](#)
- [Blocking Peptides](#)
- [Dot Blot](#)
- [Immunohistochemistry](#)
- [Immunofluorescence](#)
- [Immunoprecipitation](#)
- [Flow Cytometry](#)
- [Cell Culture](#)

IL32 Antibody - middle region - Images



Host: Rabbit
Target Name: IL32
Sample Tissue: Jurkat Whole cell lysate
s
Antibody Dilution: 1.0µg/ml

IL32 Antibody - middle region - References

- Dahl C.A., et al. J. Immunol. 148:597-603(1992).
Kim S.-H., et al. Immunity 22:131-142(2005).
Mao W., et al. Submitted (DEC-2007) to the EMBL/GenBank/DDBJ databases.
Ota T., et al. Nat. Genet. 36:40-45(2004).
Oh J.H., et al. Mamm. Genome 16:942-954(2005).