

TBRG1 antibody - N-terminal region
Rabbit Polyclonal Antibody
Catalog # AI14543

Specification

TBRG1 antibody - N-terminal region - Product Information

Application	WB
Primary Accession	Q3YBR2
Other Accession	NM_032811 , NP_116200
Reactivity	Human, Mouse, Rat, Rabbit, Pig, Horse, Bovine, Guinea Pig, Dog
Predicted	Human, Mouse, Rat, Pig, Horse, Bovine, Dog
Host	Rabbit
Clonality	Polyclonal
Calculated MW	29kDa KDa

TBRG1 antibody - N-terminal region - Additional Information

Gene ID 84897

Alias Symbol [FLJ14621](#), [FLJ25020](#), [FLJ90113](#), [MGC129890](#), [NIAM](#), [TB-5](#)

Other Names

Transforming growth factor beta regulator 1, Nuclear interactor of ARF and Mdm2, TBRG1, NIAM

Format

Liquid. Purified antibody supplied in 1x PBS buffer with 0.09% (w/v) sodium azide and 2% sucrose.

Reconstitution & Storage

Add 50 ul of distilled water. Final anti-TBRG1 antibody concentration is 1 mg/ml in PBS buffer with 2% sucrose. For longer periods of storage, store at 20°C. Avoid repeat freeze-thaw cycles.

Precautions

TBRG1 antibody - N-terminal region is for research use only and not for use in diagnostic or therapeutic procedures.

TBRG1 antibody - N-terminal region - Protein Information

Name TBRG1

Synonyms NIAM

Function

Acts as a growth inhibitor. Can activate p53/TP53, causes G1 arrest and collaborates with CDKN2A to restrict proliferation, but does not require either protein to inhibit DNA synthesis. Redistributes CDKN2A into the nucleoplasm. Involved in maintaining chromosomal stability.

Cellular Location

Nucleus.

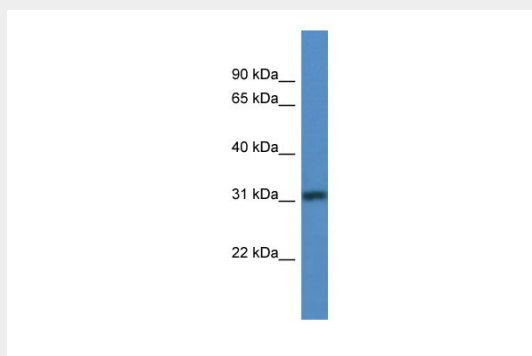
Tissue Location

Widely expressed at low levels in most tissues, with highest levels in pancreas, lung and liver. Expression is decreased in primary tumors including lung, liver, breast, pancreas and kidney carcinomas, chronic lymphocytic leukemia and diffuse large B- cell lymphoma.

TBRG1 antibody - N-terminal region - Protocols

Provided below are standard protocols that you may find useful for product applications.

- [Western Blot](#)
- [Blocking Peptides](#)
- [Dot Blot](#)
- [Immunohistochemistry](#)
- [Immunofluorescence](#)
- [Immunoprecipitation](#)
- [Flow Cytometry](#)
- [Cell Culture](#)

TBRG1 antibody - N-terminal region - Images

WB Suggested Anti-TBRG1 Antibody Titration: 0.2-1 $\mu\text{g/ml}$

ELISA Titer: 1:312500

Positive Control: Human Lung

TBRG1 antibody - N-terminal region - References

Tompkins V.S., et al. *J. Biol. Chem.* 282:1322-1333(2007).

Ota T., et al. *Nat. Genet.* 36:40-45(2004).

Zhou G., et al. Submitted (JUL-2004) to the EMBL/GenBank/DDBJ databases.

Suzuki Y., et al. Submitted (APR-2005) to the EMBL/GenBank/DDBJ databases.

Bechtel S., et al. *BMC Genomics* 8:399-399(2007).