

F7 antibody - C-terminal region
Rabbit Polyclonal Antibody
Catalog # AI14492

Specification

F7 antibody - C-terminal region - Product Information

Application	WB
Primary Accession	P08709
Other Accession	NM_000131 , NP_000122
Reactivity	Human, Mouse, Rabbit, Dog
Predicted	Human, Dog
Host	Rabbit
Clonality	Polyclonal
Calculated MW	28kDa KDa

F7 antibody - C-terminal region - Additional Information

Gene ID 2155

Alias Symbol SPCA

Other Names

Coagulation factor VII, 3.4.21.21, Proconvertin, Serum prothrombin conversion accelerator, SPCA, Eptacog alfa, Factor VII light chain, Factor VII heavy chain, F7

Format

Liquid. Purified antibody supplied in 1x PBS buffer with 0.09% (w/v) sodium azide and 2% sucrose.

Reconstitution & Storage

Add 50 ul of distilled water. Final anti-F7 antibody concentration is 1 mg/ml in PBS buffer with 2% sucrose. For longer periods of storage, store at 20°C. Avoid repeat freeze-thaw cycles.

Precautions

F7 antibody - C-terminal region is for research use only and not for use in diagnostic or therapeutic procedures.

F7 antibody - C-terminal region - Protein Information

Name F7

Function

Initiates the extrinsic pathway of blood coagulation. Serine protease that circulates in the blood in a zymogen form. Factor VII is converted to factor VIIa by factor Xa, factor XIIIa, factor IXa, or thrombin by minor proteolysis. In the presence of tissue factor and calcium ions, factor VIIa then converts factor X to factor Xa by limited proteolysis. Factor VIIa will also convert factor IX to factor IXa in the presence of tissue factor and calcium.

Cellular Location

Secreted.

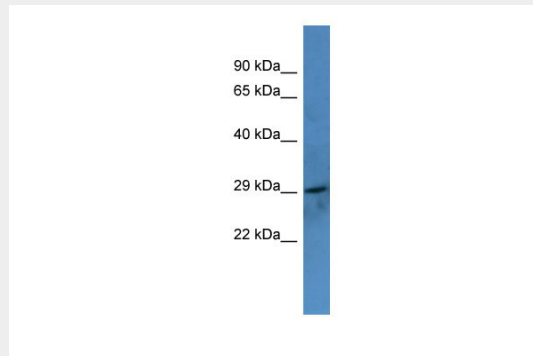
Tissue Location

Plasma.

F7 antibody - C-terminal region - Protocols

Provided below are standard protocols that you may find useful for product applications.

- [Western Blot](#)
- [Blocking Peptides](#)
- [Dot Blot](#)
- [Immunohistochemistry](#)
- [Immunofluorescence](#)
- [Immunoprecipitation](#)
- [Flow Cytometry](#)
- [Cell Culture](#)

F7 antibody - C-terminal region - Images

WB Suggested Anti-F7 Antibody Titration: 0.2-1 μ g/ml

ELISA Titer: 1:62500

Positive Control: Human heart

F7 antibody - C-terminal region - References

Hagen F.S., et al. Proc. Natl. Acad. Sci. U.S.A. 83:2412-2416(1986).

O'Hara P.J., et al. Proc. Natl. Acad. Sci. U.S.A. 84:5158-5162(1987).

Sabater-Lleal M., et al. Hum. Genet. 118:741-751(2006).

Soria J.M., et al. Submitted (DEC-2002) to the EMBL/GenBank/DDBJ databases.

Masroori N., et al. Submitted (MAR-2008) to the EMBL/GenBank/DDBJ databases.