

ADAM8 antibody - N-terminal region
Rabbit Polyclonal Antibody
Catalog # AI14479**Specification**

ADAM8 antibody - N-terminal region - Product Information

Application	WB
Primary Accession	P78325
Other Accession	NM_001109 , NP_001100
Reactivity	Human, Mouse, Rat, Rabbit
Predicted	Human, Mouse
Host	Rabbit
Clonality	Polyclonal
Calculated MW	94kDa KDa

ADAM8 antibody - N-terminal region - Additional Information**Gene ID 101**Alias Symbol **CD156, MGC134985, MS2****Other Names**

Disintegrin and metalloproteinase domain-containing protein 8, ADAM 8, 3.4.24.-, Cell surface antigen MS2, CD156a, ADAM8, MS2

Format

Liquid. Purified antibody supplied in 1x PBS buffer with 0.09% (w/v) sodium azide and 2% sucrose.

Reconstitution & Storage

Add 50 ul of distilled water. Final anti-ADAM8 antibody concentration is 1 mg/ml in PBS buffer with 2% sucrose. For longer periods of storage, store at 20°C. Avoid repeat freeze-thaw cycles.

Precautions

ADAM8 antibody - N-terminal region is for research use only and not for use in diagnostic or therapeutic procedures.

ADAM8 antibody - N-terminal region - Protein Information**Name** ADAM8**Synonyms** MS2**Function**

Possible involvement in extravasation of leukocytes.

Cellular Location

Membrane; Single-pass type I membrane protein.

Tissue Location

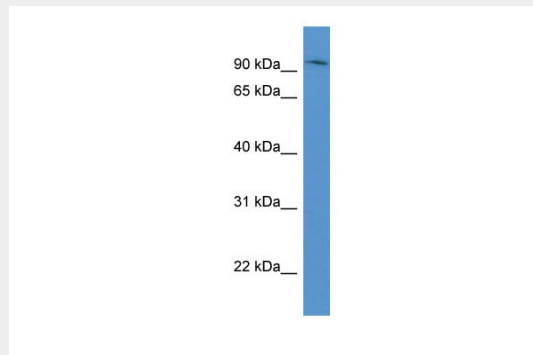
Expressed on neutrophils and monocytes.

ADAM8 antibody - N-terminal region - Protocols

Provided below are standard protocols that you may find useful for product applications.

- [Western Blot](#)
- [Blocking Peptides](#)
- [Dot Blot](#)
- [Immunohistochemistry](#)
- [Immunofluorescence](#)
- [Immunoprecipitation](#)
- [Flow Cytometry](#)
- [Cell Culture](#)

ADAM8 antibody - N-terminal region - Images



WB Suggested Anti-ADAM8 Antibody Titration: 0.2-1 $\mu\text{g/ml}$
ELISA Titer: 1:62500
Positive Control: PANC1 cell lysate