

HHIPL1 antibody - C-terminal region
Rabbit Polyclonal Antibody
Catalog # AI14475**Specification**

HHIPL1 antibody - C-terminal region - Product Information

Application	WB
Primary Accession	O96JK4
Other Accession	NM_001127258 , NP_001120730
Reactivity	Human, Mouse, Rat, Rabbit, Pig, Horse, Bovine, Guinea Pig, Dog
Predicted	Human, Rat, Rabbit, Pig, Bovine, Guinea Pig, Dog
Host	Rabbit
Clonality	Polyclonal
Calculated MW	85kDa KDa

HHIPL1 antibody - C-terminal region - Additional Information**Gene ID** 84439**Alias Symbol** KIAA1822, UNQ9245
Other Names
HHIP-like protein 1, HHIPL1, HHIP2, KIAA1822**Format**

Liquid. Purified antibody supplied in 1x PBS buffer with 0.09% (w/v) sodium azide and 2% sucrose.

Reconstitution & Storage

Add 50 ul of distilled water. Final anti-HHIPL1 antibody concentration is 1 mg/ml in PBS buffer with 2% sucrose. For longer periods of storage, store at 20°C. Avoid repeat freeze-thaw cycles.

Precautions

HHIPL1 antibody - C-terminal region is for research use only and not for use in diagnostic or therapeutic procedures.

HHIPL1 antibody - C-terminal region - Protein Information**Name** HHIPL1**Synonyms** HHIP2, KIAA1822**Cellular Location**

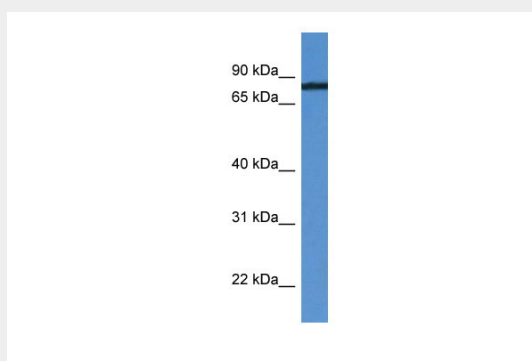
Secreted.

HHIPL1 antibody - C-terminal region - Protocols

Provided below are standard protocols that you may find useful for product applications.

- [Western Blot](#)
- [Blocking Peptides](#)
- [Dot Blot](#)
- [Immunohistochemistry](#)
- [Immunofluorescence](#)
- [Immunoprecipitation](#)
- [Flow Cytometry](#)
- [Cell Culture](#)

HHIPL1 antibody - C-terminal region - Images



WB Suggested Anti-HHIPL1 Antibody Titration: 0.2-1 μ g/ml

ELISA Titer: 1:62500

Positive Control: MDA-MB-435S cell lysate

HHIPL1 antibody - C-terminal region - References

Clark H.F., et al. *Genome Res.* 13:2265-2270(2003).

Heilig R., et al. *Nature* 421:601-607(2003).

Nagase T., et al. *DNA Res.* 8:85-95(2001).

Katoh Y., et al. *Int. J. Mol. Med.* 17:391-395(2006).