

STARD8 antibody - N-terminal region
Rabbit Polyclonal Antibody
Catalog # AI14435**Specification**

STARD8 antibody - N-terminal region - Product Information

Application	WB
Primary Accession	O92502
Other Accession	NM_001142503 , NP_001135975
Reactivity	Human, Dog
Predicted	Dog
Host	Rabbit
Clonality	Polyclonal
Calculated MW	122kDa KDa

STARD8 antibody - N-terminal region - Additional Information**Gene ID** 9754**Alias Symbol** DKFZp686H1668, DLC3, KIAA0189, STARTGAP3, ARHGAP38**Other Names**

StAR-related lipid transfer protein 8, Deleted in liver cancer 3 protein, DLC-3, START domain-containing protein 8, StARD8, START-GAP3, STARD8, DLC3, KIAA0189

Format

Liquid. Purified antibody supplied in 1x PBS buffer with 0.09% (w/v) sodium azide and 2% sucrose.

Reconstitution & Storage

Add 50 ul of distilled water. Final anti-STARD8 antibody concentration is 1 mg/ml in PBS buffer with 2% sucrose. For longer periods of storage, store at 20°C. Avoid repeat freeze-thaw cycles.

Precautions

STARD8 antibody - N-terminal region is for research use only and not for use in diagnostic or therapeutic procedures.

STARD8 antibody - N-terminal region - Protein Information**Name** STARD8**Synonyms** DLC3, KIAA0189**Function**

Accelerates GTPase activity of RHOA and CDC42, but not RAC1. Stimulates the hydrolysis of phosphatidylinositol 4,5-bisphosphate by PLCD1.

Cellular Location

Cell junction, focal adhesion

Tissue Location

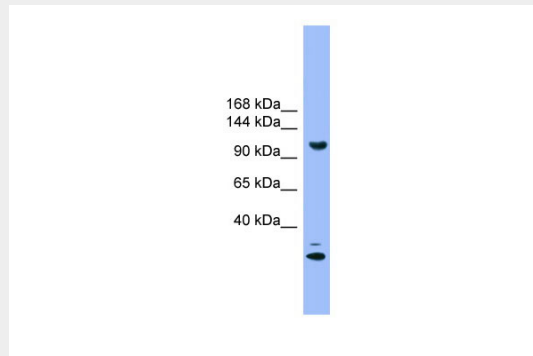
Widely expressed with highest levels in kidney, lung and placenta.

STARD8 antibody - N-terminal region - Protocols

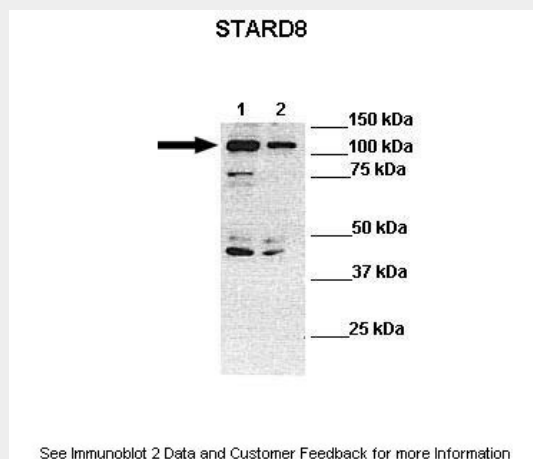
Provided below are standard protocols that you may find useful for product applications.

- [Western Blot](#)
- [Blocking Peptides](#)
- [Dot Blot](#)
- [Immunohistochemistry](#)
- [Immunofluorescence](#)
- [Immunoprecipitation](#)
- [Flow Cytometry](#)
- [Cell Culture](#)

STARD8 antibody - N-terminal region - Images



WB Suggested Anti-STARD8 Antibody Titration: 1.0 µg/ml
Positive Control: 293T Whole Cell



Lanes: Lane 1: 30ug human HLE lysate Lane 2: 30ug human PLC/PRF-5 lysate
Primary Antibody Dilution: 1:1000
Secondary Antibody: Anti-rabbit-HRP Anti-rabbit-HRP
Secondary Antibody Dilution: 1:10,000
Gene Name: STARD8
Submitted by: Dr Frankie Ko Chi Fat, Lo-Kong Chan, Irene O.L. Ng, Judy Wai Ping Yam; Department

of Pathology, The University of Hong Kong

STAR8 antibody - N-terminal region - References

- Nagase T., et al. DNA Res. 3:17-24(1996).
Ota T., et al. Nat. Genet. 36:40-45(2004).
Bechtel S., et al. BMC Genomics 8:399-399(2007).
Ross M.T., et al. Nature 434:325-337(2005).
Mural R.J., et al. Submitted (SEP-2005) to the EMBL/GenBank/DDBJ databases.