

Tubb2a Antibody - C-terminal region
Rabbit Polyclonal Antibody
Catalog # AI14306

Specification

Tubb2a Antibody - C-terminal region - Product Information

| | |
|-------------------|--|
| Application | WB |
| Primary Accession | Q7TMM9 |
| Other Accession | NM_009450 , NP_033476 |
| Reactivity | Human, Mouse, Rat, Rabbit, Horse, Bovine, Guinea Pig, Dog |
| Predicted | Human, Mouse, Rat, Rabbit, Pig, Horse, Bovine, Guinea Pig, Dog |
| Host | Rabbit |
| Clonality | Polyclonal |
| Calculated MW | 50kDa KDa |

Tubb2a Antibody - C-terminal region - Additional Information

Gene ID 22151

Alias Symbol M(beta)2, Tubb2
Other Names
Tubulin beta-2A chain, Tubb2a, Tubb2

Format

Liquid. Purified antibody supplied in 1x PBS buffer with 0.09% (w/v) sodium azide and 2% sucrose.

Reconstitution & Storage

Add 50 ul of distilled water. Final anti-Tubb2a antibody concentration is 1 mg/ml in PBS buffer with 2% sucrose. For longer periods of storage, store at 20°C. Avoid repeat freeze-thaw cycles.

Precautions

Tubb2a Antibody - C-terminal region is for research use only and not for use in diagnostic or therapeutic procedures.

Tubb2a Antibody - C-terminal region - Protein Information

Name Tubb2a

Synonyms Tubb2

Function

Tubulin is the major constituent of microtubules, a cylinder consisting of laterally associated linear protofilaments composed of alpha- and beta-tubulin heterodimers. Microtubules grow by the addition of GTP-tubulin dimers to the microtubule end, where a stabilizing cap forms. Below the cap, tubulin dimers are in GDP-bound state, owing to GTPase activity of alpha-tubulin.

Cellular Location

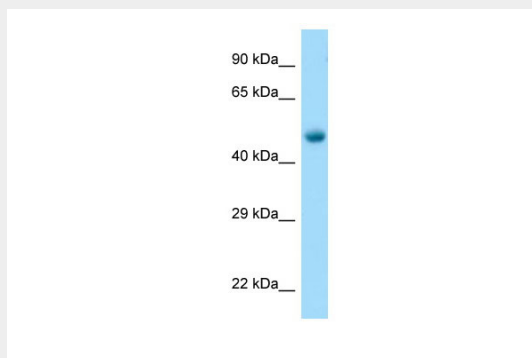
Cytoplasm, cytoskeleton.

Tubb2a Antibody - C-terminal region - Protocols

Provided below are standard protocols that you may find useful for product applications.

- [Western Blot](#)
- [Blocking Peptides](#)
- [Dot Blot](#)
- [Immunohistochemistry](#)
- [Immunofluorescence](#)
- [Immunoprecipitation](#)
- [Flow Cytometry](#)
- [Cell Culture](#)

Tubb2a Antibody - C-terminal region - Images



WB Suggested Anti-Tubb2a Antibody Titration: 1.0 µg/ml
Positive Control: Mouse Muscle

Tubb2a Antibody - C-terminal region - References

- Carninci P., et al. *Science* 309:1559-1563(2005).
Lubec G., et al. Submitted (JAN-2009) to UniProtKB.
Janke C., et al. *Science* 308:1758-1762(2005).
Rogowski K., et al. *Cell* 137:1076-1087(2009).
Yoshida K., et al. *Biochem. Biophys. Res. Commun.* 389:506-511(2009).