

CENPH antibody - middle region
Rabbit Polyclonal Antibody
Catalog # AI14272**Specification**

CENPH antibody - middle region - Product Information

Application	WB
Primary Accession	O9H3R5
Other Accession	NM_022909 , NP_075060
Reactivity	Human, Mouse, Rat, Rabbit, Pig, Horse, Bovine, Guinea Pig, Dog
Predicted Host	Human, Mouse, Horse, Bovine, Dog
Clonality	Rabbit
Calculated MW	Polyclonal 27kDa KDa

CENPH antibody - middle region - Additional Information**Gene ID** 64946**Alias Symbol** **NNF1, PMF1****Other Names**

Centromere protein H, CENP-H, Interphase centromere complex protein 35, CENPH (http://www.genenames.org/cgi-bin/gene_symbol_report?hgnc_id=17268)
HGNC:17268, ICEN35

Format

Liquid. Purified antibody supplied in 1x PBS buffer with 0.09% (w/v) sodium azide and 2% sucrose.

Reconstitution & Storage

Add 50 ul of distilled water. Final anti-CENPH antibody concentration is 1 mg/ml in PBS buffer with 2% sucrose. For longer periods of storage, store at 20°C. Avoid repeat freeze-thaw cycles.

Precautions

CENPH antibody - middle region is for research use only and not for use in diagnostic or therapeutic procedures.

CENPH antibody - middle region - Protein Information**Name** CENPH ([HGNC:17268](#))**Synonyms** ICEN35**Function**

Component of the CENPA-NAC (nucleosome-associated) complex, a complex that plays a central role in assembly of kinetochore proteins, mitotic progression and chromosome segregation. The CENPA-NAC complex recruits the CENPA-CAD (nucleosome distal) complex and may be involved in incorporation of newly synthesized CENPA into centromeres. Required for chromosome

congression and efficiently align the chromosomes on a metaphase plate.

Cellular Location

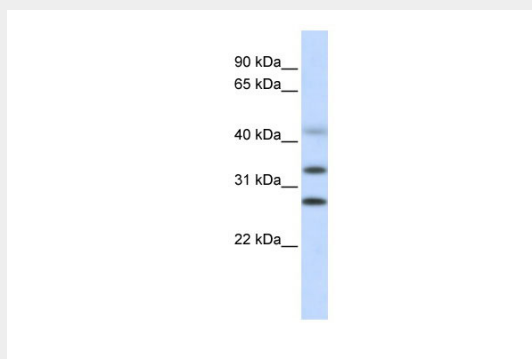
Nucleus. Chromosome, centromere, kinetochore. Note=Associates with active centromere-kinetochore complexes throughout the cell cycle. Colocalizes with inner kinetochore plate proteins CENPA and CENPC during both interphase and metaphase

CENPH antibody - middle region - Protocols

Provided below are standard protocols that you may find useful for product applications.

- [Western Blot](#)
- [Blocking Peptides](#)
- [Dot Blot](#)
- [Immunohistochemistry](#)
- [Immunofluorescence](#)
- [Immunoprecipitation](#)
- [Flow Cytometry](#)
- [Cell Culture](#)

CENPH antibody - middle region - Images



WB Suggested Anti-CENPH Antibody Titration: 0.2-1 $\mu\text{g/ml}$
ELISA Titer: 1:1562500
Positive Control: Human Liver