

SUMO3 antibody - middle region
Rabbit Polyclonal Antibody
Catalog # AI14266**Specification**

SUMO3 antibody - middle region - Product Information

| | |
|-------------------|---|
| Application | WB |
| Primary Accession | P55854 |
| Other Accession | NM_006936 , NP_008867 |
| Reactivity | Human |
| Predicted | Human |
| Host | Rabbit |
| Clonality | Polyclonal |
| Calculated MW | 12kDa KDa |

SUMO3 antibody - middle region - Additional Information**Gene ID 6612**Alias Symbol **SMT3A, SMT3H1, SUMO-3, Smt3B****Other Names**

Small ubiquitin-related modifier 3, SUMO-3, SMT3 homolog 1 {ECO:0000312|HGNC:HGNC:11124}, SUMO-2, Ubiquitin-like protein SMT3A, Smt3A, SUMO3 (http://www.genenames.org/cgi-bin/gene_symbol_report?hgnc_id=11124)
HGNC:11124

Format

Liquid. Purified antibody supplied in 1x PBS buffer with 0.09% (w/v) sodium azide and 2% sucrose.

Reconstitution & Storage

Add 50 ul of distilled water. Final anti-SUMO3 antibody concentration is 1 mg/ml in PBS buffer with 2% sucrose. For longer periods of storage, store at 20°C. Avoid repeat freeze-thaw cycles.

Precautions

SUMO3 antibody - middle region is for research use only and not for use in diagnostic or therapeutic procedures.

SUMO3 antibody - middle region - Protein InformationName SUMO3 ([HGNC:11124](#))**Function**

Ubiquitin-like protein which can be covalently attached to target lysines either as a monomer or as a lysine-linked polymer. Does not seem to be involved in protein degradation and may function as an antagonist of ubiquitin in the degradation process. Plays a role in a number of cellular processes such as nuclear transport, DNA replication and repair, mitosis and signal transduction. Covalent attachment to its substrates requires prior activation by the E1 complex SAE1-SAE2 and linkage to the E2 enzyme UBE2I, and can be promoted by an E3 ligase such as PIAS1-4, RANBP2 or

CBX4 (PubMed:11451954, PubMed:18538659, PubMed:21965678). Plays a role in the regulation of sumoylation status of SETX (PubMed:24105744).

Cellular Location

Cytoplasm. Nucleus. Nucleus, PML body

Tissue Location

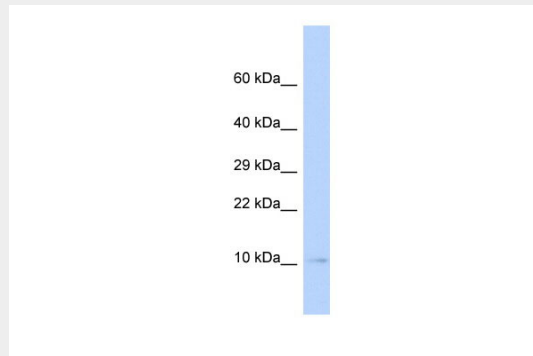
Expressed predominantly in liver.

SUMO3 antibody - middle region - Protocols

Provided below are standard protocols that you may find useful for product applications.

- [Western Blot](#)
- [Blocking Peptides](#)
- [Dot Blot](#)
- [Immunohistochemistry](#)
- [Immunofluorescence](#)
- [Immunoprecipitation](#)
- [Flow Cytometry](#)
- [Cell Culture](#)

SUMO3 antibody - middle region - Images



WB Suggested Anti-SUMO3 Antibody Titration: 0.2-1 µg/ml

ELISA Titer: 1:62500

Positive Control: MCF7 cell lysate

SUMO3 is strongly supported by BioGPS gene expression data to be expressed in Human MCF7 cells