

TFPI2 antibody - middle region
Rabbit Polyclonal Antibody
Catalog # AI14265

Specification

TFPI2 antibody - middle region - Product Information

Application	IHC, WB
Primary Accession	P48307
Other Accession	NM_006528 , NP_006519
Reactivity	Human
Predicted	Human
Host	Rabbit
Clonality	Polyclonal
Calculated MW	26kDa KDa

TFPI2 antibody - middle region - Additional Information

Gene ID 7980

Alias Symbol **FLJ21164, PP5, TFPI-2, REF1**

Other Names

Tissue factor pathway inhibitor 2, TFPI-2, Placental protein 5, PP5, TFPI2

Format

Liquid. Purified antibody supplied in 1x PBS buffer with 0.09% (w/v) sodium azide and 2% sucrose.

Reconstitution & Storage

Add 50 ul of distilled water. Final anti-TFPI2 antibody concentration is 1 mg/ml in PBS buffer with 2% sucrose. For longer periods of storage, store at 20°C. Avoid repeat freeze-thaw cycles.

Precautions

TFPI2 antibody - middle region is for research use only and not for use in diagnostic or therapeutic procedures.

TFPI2 antibody - middle region - Protein Information

Name TFPI2

Function

May play a role in the regulation of plasmin-mediated matrix remodeling. Inhibits trypsin, plasmin, factor VIIa/tissue factor and weakly factor Xa. Has no effect on thrombin.

Cellular Location

Secreted.

Tissue Location

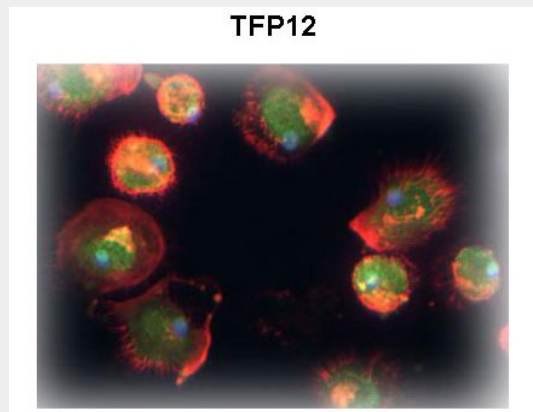
Umbilical vein endothelial cells, liver, placenta, heart, pancreas, and maternal serum at advanced pregnancy

TFPI2 antibody - middle region - Protocols

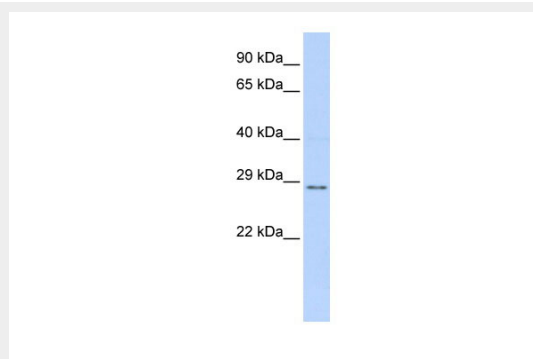
Provided below are standard protocols that you may find useful for product applications.

- [Western Blot](#)
- [Blocking Peptides](#)
- [Dot Blot](#)
- [Immunohistochemistry](#)
- [Immunofluorescence](#)
- [Immunoprecipitation](#)
- [Flow Cytometry](#)
- [Cell Culture](#)

TFPI2 antibody - middle region - Images



Sample Type: Human Macrophage Cells Green: primary Red: phalloidin Blue: DAPI Yellow: green/red Primary Dilution: 1:200
Secondary Antibody: anti-Rabbit IgG-FITC Secondary Dilution: 1:1000 Image
Submitted by: Milan Fiala University of California, Los Angeles



WB Suggested Anti-TFPI2 Antibody Titration: 0.2-1 μ g/ml
ELISA Titer: 1:62500
Positive Control: MCF7 cell lysate

TFPI2 antibody - middle region - References

Miyagi Y., et al. J. Biochem. 116:939-942(1994).
Sprecher C.A., et al. Proc. Natl. Acad. Sci. U.S.A. 91:3353-3357(1994).

Kamei S.,et al.Biochim. Biophys. Acta 1517:430-435(2001).
Xu Y.,et al.Submitted (JUL-2004) to the EMBL/GenBank/DDBJ databases.
Ota T.,et al.Nat. Genet. 36:40-45(2004).