

HLX antibody - middle region
Rabbit Polyclonal Antibody
Catalog # AI14243**Specification**

HLX antibody - middle region - Product Information

Application	WB
Primary Accession	Q14774
Other Accession	NM_021958 , NP_068777
Reactivity	Human, Mouse, Rat, Rabbit, Pig, Horse, Yeast, Bovine, Guinea Pig, Dog
Predicted	Human, Mouse, Rat, Rabbit, Pig, Horse, Bovine, Guinea Pig, Dog
Host	Rabbit
Clonality	Polyclonal
Calculated MW	51kDa KDa

HLX antibody - middle region - Additional Information**Gene ID** 3142**Alias Symbol** **HB24, HLX1****Other Names**

H2.0-like homeobox protein, Homeobox protein HB24, Homeobox protein HLX1, HLX, HLX1

Format

Liquid. Purified antibody supplied in 1x PBS buffer with 0.09% (w/v) sodium azide and 2% sucrose.

Reconstitution & Storage

Add 50 ul of distilled water. Final anti-HLX antibody concentration is 1 mg/ml in PBS buffer with 2% sucrose. For longer periods of storage, store at 20°C. Avoid repeat freeze-thaw cycles.

Precautions

HLX antibody - middle region is for research use only and not for use in diagnostic or therapeutic procedures.

HLX antibody - middle region - Protein Information**Name** HLX**Synonyms** HLX1**Function**

Transcription factor required for TBX21/T-bet-dependent maturation of Th1 cells as well as maintenance of Th1-specific gene expression. Involved in embryogenesis and hematopoiesis (By similarity).

Cellular Location

Nucleus {ECO:0000255|PROSITE-ProRule:PRU00108}.

Tissue Location

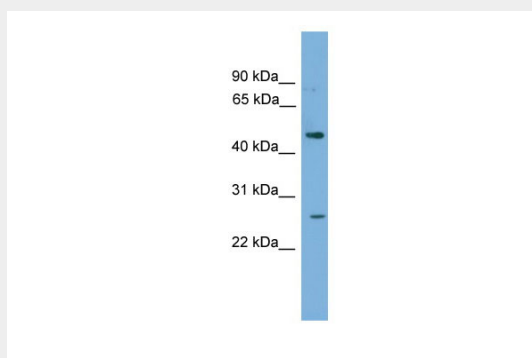
Low level in normal B and T-cells, high level in activated lymphocytes and monocytes. Also found in thymus, tonsil, bone marrow, developing vessels, and fetal brain

HLX antibody - middle region - Protocols

Provided below are standard protocols that you may find useful for product applications.

- [Western Blot](#)
- [Blocking Peptides](#)
- [Dot Blot](#)
- [Immunohistochemistry](#)
- [Immunofluorescence](#)
- [Immunoprecipitation](#)
- [Flow Cytometry](#)
- [Cell Culture](#)

HLX antibody - middle region - Images



WB Suggested Anti-HLX Antibody Titration: 0.2-1 μ g/ml
ELISA Titer: 1:1562500
Positive Control: PANC1 cell lysate

HLX antibody - middle region - References

Deguchi Y., et al. *New Biol.* 3:353-363(1991).
Hanrahan V., et al. Submitted (DEC-1999) to the EMBL/GenBank/DDBJ databases.
Ota T., et al. *Nat. Genet.* 36:40-45(2004).
Totoki Y., et al. Submitted (MAR-2005) to the EMBL/GenBank/DDBJ databases.
Gregory S.G., et al. *Nature* 441:315-321(2006).