

KLF8 antibody - N-terminal region
Rabbit Polyclonal Antibody
Catalog # AI14227**Specification**

KLF8 antibody - N-terminal region - Product Information

Application	WB
Primary Accession	O95600
Other Accession	NM_007250 , NP_009181
Reactivity	Human, Mouse, Rat, Rabbit, Pig, Guinea Pig
Predicted Host	Human, Mouse, Rabbit, Pig, Guinea Pig
Clonality	Rabbit
Calculated MW	Polyclonal 39kDa KDa

KLF8 antibody - N-terminal region - Additional Information**Gene ID** 11279**Alias Symbol** BKLF3, DKFZp686O08126, DXS741, MGC138314, ZNF741**Other Names**

Krueppel-like factor 8, Basic krueppel-like factor 3, Zinc finger protein 741, KLF8, BKLF3, ZNF741

Format

Liquid. Purified antibody supplied in 1x PBS buffer with 0.09% (w/v) sodium azide and 2% sucrose.

Reconstitution & Storage

Add 50 ul of distilled water. Final anti-KLF8 antibody concentration is 1 mg/ml in PBS buffer with 2% sucrose. For longer periods of storage, store at 20°C. Avoid repeat freeze-thaw cycles.

Precautions

KLF8 antibody - N-terminal region is for research use only and not for use in diagnostic or therapeutic procedures.

KLF8 antibody - N-terminal region - Protein Information**Name** KLF8**Synonyms** BKLF3, ZNF741**Function**

Transcriptional repressor and activator. Binds to CACCC-boxes promoter elements. Also binds the GT-box of cyclin D1 promoter and mediates cell cycle progression at G(1) phase as a downstream target of focal adhesion kinase (FAK).

Cellular Location

Nucleus.

Tissue Location

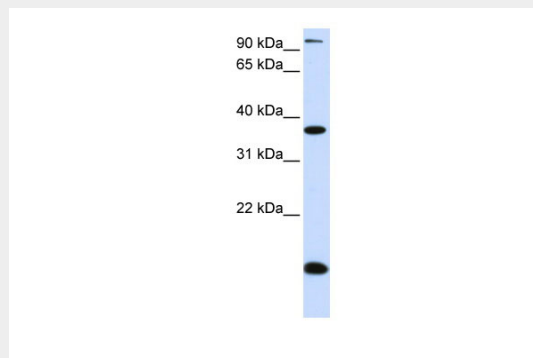
Ubiquitous..

KLF8 antibody - N-terminal region - Protocols

Provided below are standard protocols that you may find useful for product applications.

- [Western Blot](#)
- [Blocking Peptides](#)
- [Dot Blot](#)
- [Immunohistochemistry](#)
- [Immunofluorescence](#)
- [Immunoprecipitation](#)
- [Flow Cytometry](#)
- [Cell Culture](#)

KLF8 antibody - N-terminal region - Images



WB Suggested Anti-KLF8 Antibody Titration: 0.2-1 μ g/ml

ELISA Titer: 1:312500

Positive Control: Human Placenta

KLF8 antibody - N-terminal region - References

- Gorski J.L.,et al.Submitted (JUN-1995) to the EMBL/GenBank/DDBJ databases.
Camacho-Vanegas O.,et al.FASEB J. 27:432-436(2013).
Ota T.,et al.Nat. Genet. 36:40-45(2004).
Totoki Y.,et al.Submitted (MAR-2005) to the EMBL/GenBank/DDBJ databases.
Bechtel S.,et al.BMC Genomics 8:399-399(2007).