

**FEV antibody - N-terminal region**  
**Rabbit Polyclonal Antibody**  
**Catalog # AI14217****Specification**

---

**FEV antibody - N-terminal region - Product Information**

Application	<b>WB</b>
Primary Accession	<a href="#">O99581</a>
Other Accession	<a href="#">NM_017521</a> , <a href="#">NP_059991</a>
Reactivity	<b>Human, Mouse, Rat, Rabbit, Horse, Bovine, Guinea Pig, Dog</b>
Predicted Host	<b>Human, Mouse, Rat, Bovine, Guinea Pig</b>
Clonality	<b>Rabbit</b>
Calculated MW	<b>Polyclonal</b> <b>25kDa KDa</b>

**FEV antibody - N-terminal region - Additional Information****Gene ID** 54738**Alias Symbol** **HSRNAFEV, PET-1****Other Names**

Protein FEV, Fifth Ewing variant protein, PC12 ETS domain-containing transcription factor 1, PC12 ETS factor 1, Pet-1, FEV, PET1

**Format**

Liquid. Purified antibody supplied in 1x PBS buffer with 0.09% (w/v) sodium azide and 2% sucrose.

**Reconstitution & Storage**

Add 50 ul of distilled water. Final anti-FEV antibody concentration is 1 mg/ml in PBS buffer with 2% sucrose. For longer periods of storage, store at 20°C. Avoid repeat freeze-thaw cycles.

**Precautions**

FEV antibody - N-terminal region is for research use only and not for use in diagnostic or therapeutic procedures.

**FEV antibody - N-terminal region - Protein Information****Name** FEV**Synonyms** PET1**Function**Functions as a transcriptional regulator. According to PubMed: [12761502](http://www.uniprot.org/citations/12761502), it functions as a transcriptional repressor. Functions in the differentiation and the maintenance of the central serotonergic neurons. May play a role in cell growth.

### Cellular Location

Nucleus {ECO:0000255|PROSITE-ProRule:PRU00237, ECO:0000269|PubMed:12761502}

### Tissue Location

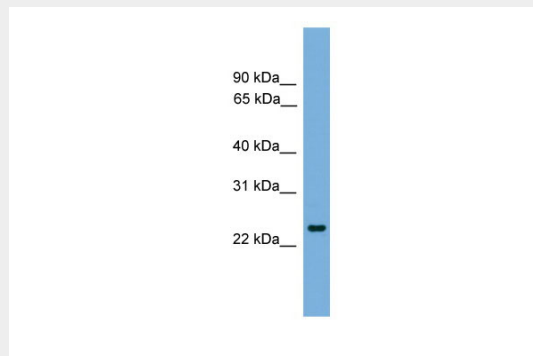
In brain, exclusively expressed in the major serotonergic neurons of the dorsal and median raphe nuclei located in the midbrain and pons. Also detected in prostate and small intestine

### FEV antibody - N-terminal region - Protocols

Provided below are standard protocols that you may find useful for product applications.

- [Western Blot](#)
- [Blocking Peptides](#)
- [Dot Blot](#)
- [Immunohistochemistry](#)
- [Immunofluorescence](#)
- [Immunoprecipitation](#)
- [Flow Cytometry](#)
- [Cell Culture](#)

### FEV antibody - N-terminal region - Images



WB Suggested Anti-FEV Antibody Titration: 0.2-1 µg/ml  
ELISA Titer: 1:1562500  
Positive Control: Hela cell lysate

### FEV antibody - N-terminal region - References

Peter M., et al. *Oncogene* 14:1159-1164(1997).  
Hillier L.W., et al. *Nature* 434:724-731(2005).  
Mural R.J., et al. Submitted (JUL-2005) to the EMBL/GenBank/DDBJ databases.  
Maurer P., et al. *Oncogene* 22:3319-3329(2003).  
Maurer P., et al. *Neurosci. Lett.* 357:215-218(2004).