

ACBD3 antibody - N-terminal region
Rabbit Polyclonal Antibody
Catalog # AI14166**Specification**

ACBD3 antibody - N-terminal region - Product Information

Application	WB
Primary Accession	O9H3P7
Other Accession	NM_022735 , NP_073572
Reactivity	Human, Mouse, Rat, Rabbit, Horse, Bovine, Guinea Pig
Predicted	Mouse, Rat, Rabbit, Chicken, Horse, Bovine, Dog
Host	Rabbit
Clonality	Polyclonal
Calculated MW	60kDa KDa

ACBD3 antibody - N-terminal region - Additional Information**Gene ID** 64746**Alias Symbol** GCP60, GOCAP1, GOLPH1, PAP7**Other Names**

Golgi resident protein GCP60, Acyl-CoA-binding domain-containing protein 3, Golgi complex-associated protein 1, GOCAP1, Golgi phosphoprotein 1, GOLPH1, PBR- and PKA-associated protein 7, Peripheral benzodiazepine receptor-associated protein PAP7, ACBD3, GCP60, GOCAP1, GOLPH1

Format

Liquid. Purified antibody supplied in 1x PBS buffer with 0.09% (w/v) sodium azide and 2% sucrose.

Reconstitution & Storage

Add 50 ul of distilled water. Final anti-ACBD3 antibody concentration is 1 mg/ml in PBS buffer with 2% sucrose. For longer periods of storage, store at 20°C. Avoid repeat freeze-thaw cycles.

Precautions

ACBD3 antibody - N-terminal region is for research use only and not for use in diagnostic or therapeutic procedures.

ACBD3 antibody - N-terminal region - Protein Information**Name** ACBD3**Synonyms** GCP60, GOCAP1, GOLPH1**Function**

Involved in the maintenance of Golgi structure by interacting with giantin, affecting protein transport between the endoplasmic reticulum and Golgi (PubMed:11590181). Involved in hormone-induced steroid biosynthesis in testicular Leydig cells (By similarity). Recruits PI4KB to the Golgi apparatus membrane; enhances the enzyme activity of PI4KB activity via its membrane recruitment thereby increasing the local concentration of the substrate in the vicinity of the kinase (PubMed:27009356).

Cellular Location

Golgi apparatus membrane; Peripheral membrane protein; Cytoplasmic side. Mitochondrion.
Note=Also mitochondrial (via its interaction with PBR).

Tissue Location

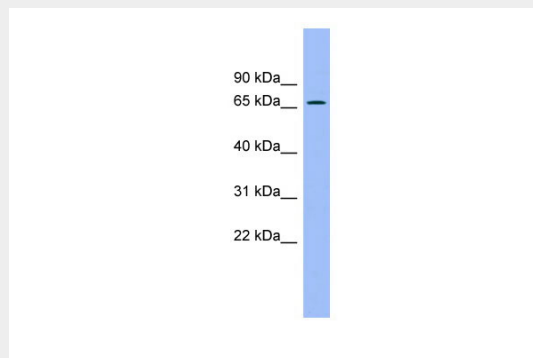
Ubiquitous, with highest expression in testis and ovary.

ACBD3 antibody - N-terminal region - Protocols

Provided below are standard protocols that you may find useful for product applications.

- [Western Blot](#)
- [Blocking Peptides](#)
- [Dot Blot](#)
- [Immunohistochemistry](#)
- [Immunofluorescence](#)
- [Immunoprecipitation](#)
- [Flow Cytometry](#)
- [Cell Culture](#)

ACBD3 antibody - N-terminal region - Images



WB Suggested Anti-ACBD3 Antibody Titration: 0.2-1 µg/ml
ELISA Titer: 1:1562500
Positive Control: Human Muscle

ACBD3 antibody - N-terminal region - References

Sohda M., et al. J. Biol. Chem. 276:45298-45306(2001).
Liu J., et al. Submitted (SEP-2002) to the EMBL/GenBank/DDBJ databases.
Ota T., et al. Nat. Genet. 36:40-45(2004).
Gregory S.G., et al. Nature 441:315-321(2006).
Mural R.J., et al. Submitted (JUL-2005) to the EMBL/GenBank/DDBJ databases.