

C17orf75 antibody - middle region
Rabbit Polyclonal Antibody
Catalog # AI14160**Specification**

C17orf75 antibody - middle region - Product Information

Application	WB
Primary Accession	O9HAS0
Other Accession	NM_022344 , NP_071739
Reactivity	Human, Mouse, Rat, Rabbit, Pig, Horse, Bovine, Guinea Pig, Dog
Predicted	Human, Rabbit, Pig, Chicken, Horse, Bovine, Guinea Pig, Dog
Host	Rabbit
Clonality	Polyclonal
Calculated MW	44kDa KDa

C17orf75 antibody - middle region - Additional Information**Gene ID** 64149**Alias Symbol** NJMU-R1
Other Names
Protein Njmu-R1, C17orf75**Format**

Liquid. Purified antibody supplied in 1x PBS buffer with 0.09% (w/v) sodium azide and 2% sucrose.

Reconstitution & Storage

Add 50 ul of distilled water. Final anti-C17orf75 antibody concentration is 1 mg/ml in PBS buffer with 2% sucrose. For longer periods of storage, store at 20°C. Avoid repeat freeze-thaw cycles.

Precautions

C17orf75 antibody - middle region is for research use only and not for use in diagnostic or therapeutic procedures.

C17orf75 antibody - middle region - Protein Information**Name** C17orf75**Function**As component of the WDR11 complex acts together with TBC1D23 to facilitate the golgin-mediated capture of vesicles generated using AP-1 (PubMed:[29426865](http://www.uniprot.org/citations/29426865)). May have a role in spermatogenesis.**Cellular Location**

Golgi apparatus, trans-Golgi network. Cytoplasmic vesicle

Tissue Location

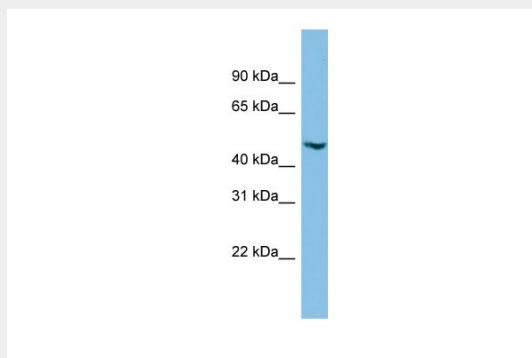
Highly expressed in testis and also expressed in fetal testis

C17orf75 antibody - middle region - Protocols

Provided below are standard protocols that you may find useful for product applications.

- [Western Blot](#)
- [Blocking Peptides](#)
- [Dot Blot](#)
- [Immunohistochemistry](#)
- [Immunofluorescence](#)
- [Immunoprecipitation](#)
- [Flow Cytometry](#)
- [Cell Culture](#)

C17orf75 antibody - middle region - Images



WB Suggested Anti-C17orf75 Antibody Titration: 0.2-1 μ g/ml

ELISA Titer: 1:312500

Positive Control: HepG2 cell lysate

C17orf75 antibody - middle region - References

- Li J.M., et al. Submitted (SEP-2000) to the EMBL/GenBank/DDBJ databases.
Dephoure N., et al. Proc. Natl. Acad. Sci. U.S.A. 105:10762-10767(2008).
Gauci S., et al. Anal. Chem. 81:4493-4501(2009).
Mayya V., et al. Sci. Signal. 2:RA46-RA46(2009).
Burkard T.R., et al. BMC Syst. Biol. 5:17-17(2011).