

ENOPH1 antibody - N-terminal region
Rabbit Polyclonal Antibody
Catalog # AI14140**Specification**

ENOPH1 antibody - N-terminal region - Product Information

Application	WB
Primary Accession	O9UHY7
Other Accession	NM_021204 , NP_067027
Reactivity	Human, Mouse, Rat, Rabbit, Pig, Horse, Bovine, Guinea Pig, Dog
Predicted Host	Human, Pig, Guinea Pig, Dog
Clonality	Rabbit
Calculated MW	Polyclonal 29kDa KDa

ENOPH1 antibody - N-terminal region - Additional Information**Gene ID** 58478**Alias Symbol** DKFZp586M0524, E1, FLJ12594, MASA, MST145**Other Names**Enolase-phosphatase E1 {ECO:0000255|HAMAP-Rule:MF_03117}, 3.1.3.77
{ECO:0000255|HAMAP-Rule:MF_03117}, 2, 3-diketo-5-methylthio-1-phosphopentane phosphatase
{ECO:0000255|HAMAP-Rule:MF_03117}, MASA homolog {ECO:0000255|HAMAP-Rule:MF_03117},
ENOPH1 {ECO:0000255|HAMAP-Rule:MF_03117}**Format**

Liquid. Purified antibody supplied in 1x PBS buffer with 0.09% (w/v) sodium azide and 2% sucrose.

Reconstitution & Storage

Add 50 ul of distilled water. Final anti-ENOPH1 antibody concentration is 1 mg/ml in PBS buffer with 2% sucrose. For longer periods of storage, store at 20°C. Avoid repeat freeze-thaw cycles.

Precautions

ENOPH1 antibody - N-terminal region is for research use only and not for use in diagnostic or therapeutic procedures.

ENOPH1 antibody - N-terminal region - Protein Information**Name** ENOPH1 {ECO:0000255|HAMAP-Rule:MF_03117}**Function**

Bifunctional enzyme that catalyzes the enolization of 2,3- diketo-5-methylthiopentyl-1-phosphate (DK-MTP-1-P) into the intermediate 2-hydroxy-3-keto-5-methylthiopentenyl-1-phosphate (HK-MTPenyl-1-P), which is then dephosphorylated to form the acireductone 1,2-dihydroxy-3-keto-5-methylthiopentene (DHK-MTPene).

Cellular Location

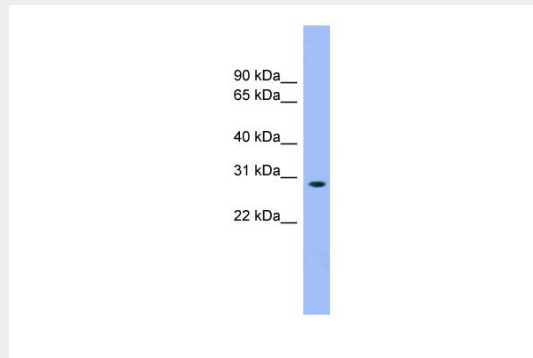
Cytoplasm {ECO:0000255|HAMAP-Rule:MF_03117}. Nucleus {ECO:0000255|HAMAP-Rule:MF_03117}

ENOPH1 antibody - N-terminal region - Protocols

Provided below are standard protocols that you may find useful for product applications.

- [Western Blot](#)
- [Blocking Peptides](#)
- [Dot Blot](#)
- [Immunohistochemistry](#)
- [Immunofluorescence](#)
- [Immunoprecipitation](#)
- [Flow Cytometry](#)
- [Cell Culture](#)

ENOPH1 antibody - N-terminal region - Images



WB Suggested Anti-ENOPH1 Antibody Titration: 0.2-1 μ g/ml

ELISA Titer: 1:1562500

Positive Control: Human Liver

ENOPH1 antibody - N-terminal region - References

- Hu R.-M., et al. Proc. Natl. Acad. Sci. U.S.A. 97:9543-9548(2000).
Ota T., et al. Nat. Genet. 36:40-45(2004).
Ebert L., et al. Submitted (JUN-2004) to the EMBL/GenBank/DDBJ databases.
Qin B.M., et al. Submitted (AUG-1999) to the EMBL/GenBank/DDBJ databases.
Burkard T.R., et al. BMC Syst. Biol. 5:17-17(2011).