

PDP2 antibody - middle region
Rabbit Polyclonal Antibody
Catalog # AI14123

Specification

PDP2 antibody - middle region - Product Information

Application	WB
Primary Accession	O9P2J9
Other Accession	NM_020786 , NP_065837
Reactivity	Human, Mouse, Rat, Rabbit, Pig, Horse, Bovine, Guinea Pig, Dog
Predicted	Human, Mouse, Rat, Rabbit, Chicken, Horse, Bovine, Dog
Host	Rabbit
Clonality	Polyclonal
Calculated MW	60kDa kDa

PDP2 antibody - middle region - Additional Information

Gene ID 57546

Alias Symbol KIAA1348, PPM2C2

Other Names

[Pyruvate dehydrogenase [acetyl-transferring]]-phosphatase 2, mitochondrial, PDP 2, 3.1.3.43, Pyruvate dehydrogenase phosphatase catalytic subunit 2, PDPC 2, PDP2, KIAA1348

Format

Liquid. Purified antibody supplied in 1x PBS buffer with 0.09% (w/v) sodium azide and 2% sucrose.

Reconstitution & Storage

Add 50 ul of distilled water. Final anti-PDP2 antibody concentration is 1 mg/ml in PBS buffer with 2% sucrose. For longer periods of storage, store at 20°C. Avoid repeat freeze-thaw cycles.

Precautions

PDP2 antibody - middle region is for research use only and not for use in diagnostic or therapeutic procedures.

PDP2 antibody - middle region - Protein Information

Name PDP2 ([HGNC:30263](#))

Synonyms KIAA1348

Function

Mitochondrial enzyme that catalyzes the dephosphorylation and concomitant reactivation of the alpha subunit of the E1 component of the pyruvate dehydrogenase complex (PDC), thereby stimulating the conversion of pyruvate into acetyl-CoA (By similarity). Acts as a crucial regulator of T cell metabolism and function, with a particular focus on T-helper Th17 (By similarity).

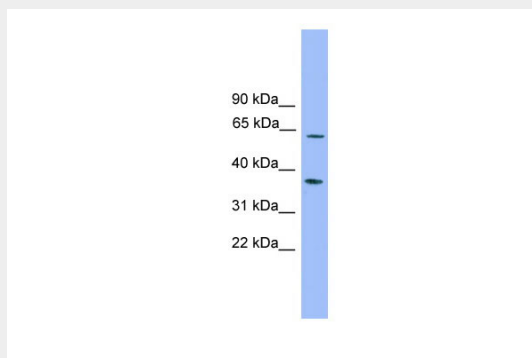
Cellular Location

Mitochondrion {ECO:0000250|UniProtKB:O88484}.

PDP2 antibody - middle region - Protocols

Provided below are standard protocols that you may find useful for product applications.

- [Western Blot](#)
- [Blocking Peptides](#)
- [Dot Blot](#)
- [Immunohistochemistry](#)
- [Immunofluorescence](#)
- [Immunoprecipitation](#)
- [Flow Cytometry](#)
- [Cell Culture](#)

PDP2 antibody - middle region - Images

WB Suggested Anti-PDP2 Antibody Titration: 0.2-1 $\mu\text{g/ml}$

ELISA Titer: 1:1562500

Positive Control: Jurkat cell lysate

PDP2 antibody - middle region - References

Nagase T., et al. DNA Res. 7:65-73(2000).

Ota T., et al. Nat. Genet. 36:40-45(2004).

Mural R.J., et al. Submitted (JUL-2005) to the EMBL/GenBank/DDBJ databases.