

Irgc1 antibody - N-terminal region
Rabbit Polyclonal Antibody
Catalog # AI14103**Specification**

Irgc1 antibody - N-terminal region - Product Information

Application	WB
Primary Accession	O8C262
Other Accession	NM_199013 , NP_950178
Reactivity	Human, Mouse, Rat, Pig, Horse, Bovine, Guinea Pig, Dog
Predicted Host	Mouse
Clonality	Rabbit
Calculated MW	Polyclonal 45kDa KDa

Irgc1 antibody - N-terminal region - Additional Information

Alias Symbol **F630044M05Rik, Gm1102, Gm474, ligp5, Irgc**

Other Names

Interferon-inducible GTPase 5, 3.6.5.-, Immunity-related GTPase cinema 1, Irgc, Gm1102, ligp5, Irgc1

Format

Liquid. Purified antibody supplied in 1x PBS buffer with 0.09% (w/v) sodium azide and 2% sucrose.

Reconstitution & Storage

Add 50 ul of distilled water. Final anti-Irgc1 antibody concentration is 1 mg/ml in PBS buffer with 2% sucrose. For longer periods of storage, store at 20°C. Avoid repeat freeze-thaw cycles.

Precautions

Irgc1 antibody - N-terminal region is for research use only and not for use in diagnostic or therapeutic procedures.

Irgc1 antibody - N-terminal region - Protein Information

Name Irgc {ECO:0000312|MGI:MGI:2685948}

Function

Required for sperm motility and therefore male fertility, via positive regulation of spermatozoa fibrous sheath formation.

Cellular Location

Cell projection, cilium, flagellum. Lipid droplet. Note=Expressed in the sperm mitochondrial sheath.

Tissue Location

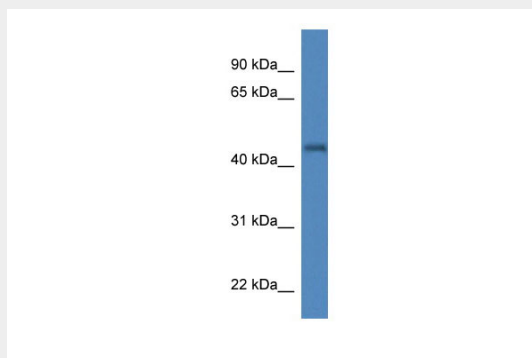
Expressed in spermatozoa tails from the testis and epididymis, where it may be a component of the fibrous sheath (at protein level).

Irgc1 antibody - N-terminal region - Protocols

Provided below are standard protocols that you may find useful for product applications.

- [Western Blot](#)
- [Blocking Peptides](#)
- [Dot Blot](#)
- [Immunohistochemistry](#)
- [Immunofluorescence](#)
- [Immunoprecipitation](#)
- [Flow Cytometry](#)
- [Cell Culture](#)

Irgc1 antibody - N-terminal region - Images



WB Suggested Anti-Irgc1 Antibody Titration: 1.0 μ g/ml
Positive Control: Mouse Brain

Irgc1 antibody - N-terminal region - References

Carninci P., et al. Science 309:1559-1563(2005).