

**EXOC6 antibody - N-terminal region**  
**Rabbit Polyclonal Antibody**  
**Catalog # AI14097****Specification**

---

**EXOC6 antibody - N-terminal region - Product Information**

Application	WB
Primary Accession	<a href="#">B3KXY5</a>
Other Accession	<a href="#">NM_001013848</a> , <a href="#">NP_001013870</a>
Reactivity	Human, Mouse, Rat, Rabbit, Pig, Bovine, Guinea Pig, Dog
Predicted	Human, Mouse, Rat, Rabbit, Pig, Chicken, Bovine, Guinea Pig, Dog
Host	Rabbit
Clonality	Polyclonal
Calculated MW	88kDa KDa

**EXOC6 antibody - N-terminal region - Additional Information**

Alias Symbol	DKFZp761I2124, EXOC6A, FLJ1125, FLJ11251, MGC33397, SEC15L, SEC15L1, SEC15L3, Sec15p, SEC15
--------------	---------------------------------------------------------------------------------------------

**Format**

Liquid. Purified antibody supplied in 1x PBS buffer with 0.09% (w/v) sodium azide and 2% sucrose.

**Reconstitution & Storage**

Add 50 ul of distilled water. Final anti-EXOC6 antibody concentration is 1 mg/ml in PBS buffer with 2% sucrose. For longer periods of storage, store at 20°C. Avoid repeat freeze-thaw cycles.

**Precautions**

EXOC6 antibody - N-terminal region is for research use only and not for use in diagnostic or therapeutic procedures.

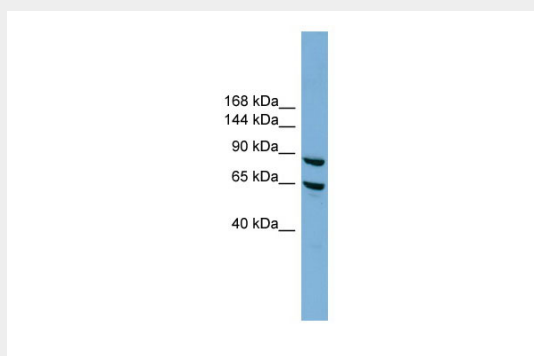
**EXOC6 antibody - N-terminal region - Protein Information****EXOC6 antibody - N-terminal region - Protocols**

Provided below are standard protocols that you may find useful for product applications.

- [Western Blot](#)
- [Blocking Peptides](#)
- [Dot Blot](#)
- [Immunohistochemistry](#)
- [Immunofluorescence](#)
- [Immunoprecipitation](#)
- [Flow Cytometry](#)

- [Cell Culture](#)

## EXOC6 antibody - N-terminal region - Images



WB Suggested Anti-EXOC6 Antibody Titration: 0.2-1  $\mu$ g/ml  
Positive Control: HepG2 cell lysate