

LANCL2 antibody - middle region
Rabbit Polyclonal Antibody
Catalog # AI14089

Specification

LANCL2 antibody - middle region - Product Information

Application	WB
Primary Accession	O9NS86
Other Accession	NM_018697 , NP_061167
Reactivity	Human, Mouse, Rat, Rabbit, Horse, Bovine, Guinea Pig, Dog
Predicted	Human, Mouse, Rat, Rabbit, Chicken, Horse, Bovine, Dog
Host	Rabbit
Clonality	Polyclonal
Calculated MW	51kDa KDa

LANCL2 antibody - middle region - Additional Information

Gene ID 55915

Alias Symbol GPR69B, MGC87139, TASP

Other Names

LanC-like protein 2, Testis-specific adriamycin sensitivity protein, LANCL2, GPR69B, TASP

Format

Liquid. Purified antibody supplied in 1x PBS buffer with 0.09% (w/v) sodium azide and 2% sucrose.

Reconstitution & Storage

Add 50 ul of distilled water. Final anti-LANCL2 antibody concentration is 1 mg/ml in PBS buffer with 2% sucrose. For longer periods of storage, store at 20°C. Avoid repeat freeze-thaw cycles.

Precautions

LANCL2 antibody - middle region is for research use only and not for use in diagnostic or therapeutic procedures.

LANCL2 antibody - middle region - Protein Information

Name LANCL2

Synonyms GPR69B, TASP

Function

Necessary for abscisic acid (ABA) binding on the cell membrane and activation of the ABA signaling pathway in granulocytes.

Cellular Location

Nucleus. Cytoplasm. Cell membrane Note=Localizes to the juxta-nuclear vesicles

(PubMed:16979580) Associates with the cortical actin cytoskeleton (PubMed:16979580)
Cholesterol depletion by methyl-beta-cyclodextrin causes partial dissociation from the cell membrane in vitro and an enhanced cell detachment from the matrix in vivo (PubMed:16979580).
Membrane- association is important for the increased cellular sensitivity to an anticancer drug (adriamycin) (PubMed:16979580)

Tissue Location

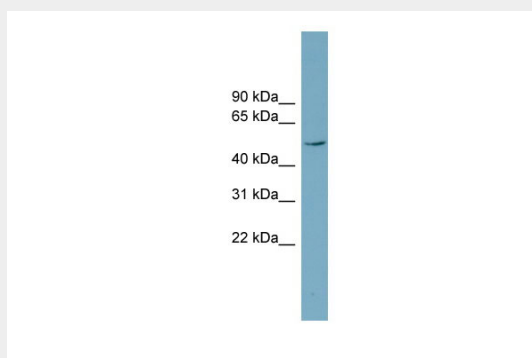
Expressed in brain and testis.

LANCL2 antibody - middle region - Protocols

Provided below are standard protocols that you may find useful for product applications.

- [Western Blot](#)
- [Blocking Peptides](#)
- [Dot Blot](#)
- [Immunohistochemistry](#)
- [Immunofluorescence](#)
- [Immunoprecipitation](#)
- [Flow Cytometry](#)
- [Cell Culture](#)

LANCL2 antibody - middle region - Images



WB Suggested Anti-LANCL2 Antibody Titration: 0.2-1 µg/ml

ELISA Titer: 1:1562500

Positive Control: Human Muscle

LANCL2 antibody - middle region - References

- Mayer H., et al. DNA Seq. 12:161-166(2001).
Sugimoto Y., et al. Submitted (DEC-1999) to the EMBL/GenBank/DDBJ databases.
Eley G.D., et al. Submitted (FEB-2001) to the EMBL/GenBank/DDBJ databases.
Ota T., et al. Nat. Genet. 36:40-45(2004).
Hillier L.W., et al. Nature 424:157-164(2003).