

RMND1 antibody - middle region
Rabbit Polyclonal Antibody
Catalog # AI14051**Specification**

RMND1 antibody - middle region - Product Information

Application	WB
Primary Accession	O9NWS8
Other Accession	NM_017909 , NP_060379
Reactivity	Human, Mouse, Rat, Rabbit, Horse, Bovine, Guinea Pig, Dog
Predicted	Human, Mouse, Rat, Rabbit, Chicken, Horse, Bovine, Dog
Host	Rabbit
Clonality	Polyclonal
Calculated MW	51kDa KDa

RMND1 antibody - middle region - Additional Information**Gene ID** 55005**Alias Symbol** C6orf96, FLJ20627, MGC117362, MGC149570, MGC88260, RMD1, bA351K16, bA351K16.3**Other Names**

Required for meiotic nuclear division protein 1 homolog, RMND1, C6orf96

Format

Liquid. Purified antibody supplied in 1x PBS buffer with 0.09% (w/v) sodium azide and 2% sucrose.

Reconstitution & Storage

Add 50 ul of distilled water. Final anti-RMND1 antibody concentration is 1 mg/ml in PBS buffer with 2% sucrose. For longer periods of storage, store at 20°C. Avoid repeat freeze-thaw cycles.

Precautions

RMND1 antibody - middle region is for research use only and not for use in diagnostic or therapeutic procedures.

RMND1 antibody - middle region - Protein Information**Name** RMND1**Synonyms** C6orf96**Function**

Required for mitochondrial translation, possibly by coordinating the assembly or maintenance of the mitochondrial ribosome (PubMed:23022098, PubMed:25604853)

target="_blank">25604853).

Cellular Location

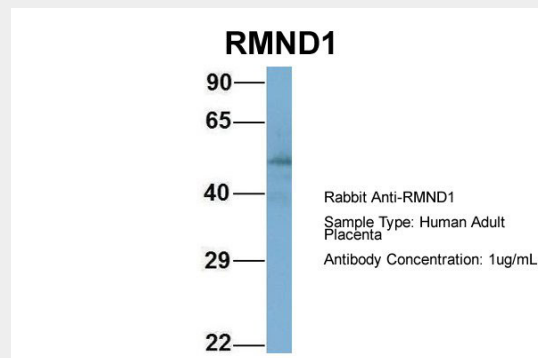
Mitochondrion. Note=May be localized in mitochondrial RNA granules (PubMed:25604853)

RMND1 antibody - middle region - Protocols

Provided below are standard protocols that you may find useful for product applications.

- [Western Blot](#)
- [Blocking Peptides](#)
- [Dot Blot](#)
- [Immunohistochemistry](#)
- [Immunofluorescence](#)
- [Immunoprecipitation](#)
- [Flow Cytometry](#)
- [Cell Culture](#)

RMND1 antibody - middle region - Images



Host:Rabbit

Target Name:RMND1

Sample Tissue:Human Adult Placenta

Antibody Dilution: 1.0µg/ml

RMND1 antibody - middle region - References

Ota T.,et al.Nat. Genet. 36:40-45(2004).

Mungall A.J.,et al.Nature 425:805-811(2003).

Mural R.J.,et al.Submitted (SEP-2005) to the EMBL/GenBank/DDBJ databases.

Burkard T.R.,et al.BMC Syst. Biol. 5:17-17(2011).

Garcia-Diaz B.,et al.Am. J. Hum. Genet. 91:729-736(2012).