

CXorf26 antibody - middle region
Rabbit Polyclonal Antibody
Catalog # AI14034**Specification**

CXorf26 antibody - middle region - Product Information

Application	WB
Primary Accession	O9BVG4
Other Accession	NM_016500 , NP_057584
Reactivity	Human, Mouse, Rat, Rabbit, Horse, Bovine, Guinea Pig, Dog
Predicted Host	Rabbit, Horse, Guinea Pig
Clonality	Rabbit
Calculated MW	Polyclonal 26kDa KDa

CXorf26 antibody - middle region - Additional Information**Gene ID** 51260**Alias Symbol** MGC874, CXorf26**Other Names**

Protein PBDC1, Polysaccharide biosynthesis domain-containing protein 1, PBDC1, CXorf26

Format

Liquid. Purified antibody supplied in 1x PBS buffer with 0.09% (w/v) sodium azide and 2% sucrose.

Reconstitution & Storage

Add 50 ul of distilled water. Final anti-CXorf26 antibody concentration is 1 mg/ml in PBS buffer with 2% sucrose. For longer periods of storage, store at 20°C. Avoid repeat freeze-thaw cycles.

Precautions

CXorf26 antibody - middle region is for research use only and not for use in diagnostic or therapeutic procedures.

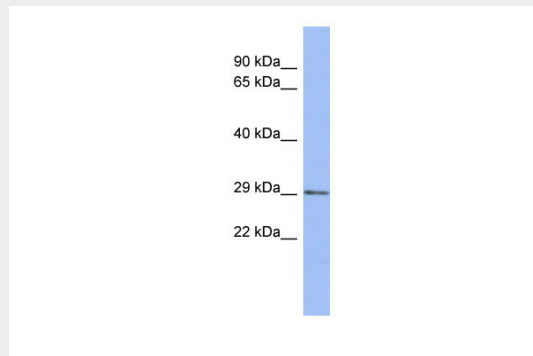
CXorf26 antibody - middle region - Protein Information**Name** PBDC1**Synonyms** CXorf26**CXorf26 antibody - middle region - Protocols**

Provided below are standard protocols that you may find useful for product applications.

- [Western Blot](#)

- [Blocking Peptides](#)
- [Dot Blot](#)
- [Immunohistochemistry](#)
- [Immunofluorescence](#)
- [Immunoprecipitation](#)
- [Flow Cytometry](#)
- [Cell Culture](#)

CXorf26 antibody - middle region - Images



WB Suggested Anti-CXorf26 Antibody Titration: 0.2-1 μ g/ml

ELISA Titer: 1:1562500

Positive Control: Human heart

CXorf26 antibody - middle region - References

- Matsuoka S., et al. *Science* 316:1160-1166(2007).
Dephoure N., et al. *Proc. Natl. Acad. Sci. U.S.A.* 105:10762-10767(2008).
Han G., et al. *Proteomics* 8:1346-1361(2008).
Burkard T.R., et al. *BMC Syst. Biol.* 5:17-17(2011).
Rigbolt K.T., et al. *Sci. Signal.* 4:RS3-RS3(2011).