

**CXorf26 antibody - middle region**  
**Rabbit Polyclonal Antibody**  
**Catalog # AI14033**

**Specification**

---

**CXorf26 antibody - middle region - Product Information**

Application	WB
Primary Accession	<a href="#">O9BVG4</a>
Other Accession	<a href="#">NM_016500</a> , <a href="#">NP_057584</a>
Reactivity	Human, Mouse, Rat, Rabbit, Pig, Horse, Bovine, Guinea Pig, Dog
Predicted Host	Human, Rabbit, Pig, Horse, Guinea Pig
Clonality	Rabbit
Calculated MW	Polyclonal 26kDa KDa

**CXorf26 antibody - middle region - Additional Information**

**Gene ID** 51260

**Alias Symbol** MGC874, CXorf26  
**Other Names**  
Protein PBDC1, Polysaccharide biosynthesis domain-containing protein 1, PBDC1, CXorf26

**Format**

Liquid. Purified antibody supplied in 1x PBS buffer with 0.09% (w/v) sodium azide and 2% sucrose.

**Reconstitution & Storage**

Add 50 ul of distilled water. Final anti-CXorf26 antibody concentration is 1 mg/ml in PBS buffer with 2% sucrose. For longer periods of storage, store at 20°C. Avoid repeat freeze-thaw cycles.

**Precautions**

CXorf26 antibody - middle region is for research use only and not for use in diagnostic or therapeutic procedures.

**CXorf26 antibody - middle region - Protein Information**

**Name** PBDC1

**Synonyms** CXorf26

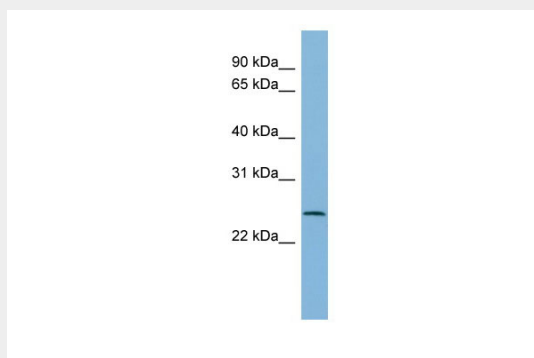
**CXorf26 antibody - middle region - Protocols**

Provided below are standard protocols that you may find useful for product applications.

- [Western Blot](#)

- [Blocking Peptides](#)
- [Dot Blot](#)
- [Immunohistochemistry](#)
- [Immunofluorescence](#)
- [Immunoprecipitation](#)
- [Flow Cytometry](#)
- [Cell Culture](#)

### CXorf26 antibody - middle region - Images



WB Suggested Anti-CXorf26 Antibody Titration: 0.2-1  $\mu$ g/ml  
ELISA Titer: 1:312500  
Positive Control: HT1080 cell lysate

### CXorf26 antibody - middle region - References

- Matsuoka S., et al. *Science* 316:1160-1166(2007).  
Dephoure N., et al. *Proc. Natl. Acad. Sci. U.S.A.* 105:10762-10767(2008).  
Han G., et al. *Proteomics* 8:1346-1361(2008).  
Burkard T.R., et al. *BMC Syst. Biol.* 5:17-17(2011).  
Rigbolt K.T., et al. *Sci. Signal.* 4:RS3-RS3(2011).