

**APIP antibody - middle region**  
**Rabbit Polyclonal Antibody**  
**Catalog # AI14005**

**Specification**

---

**APIP antibody - middle region - Product Information**

Application	WB
Primary Accession	<a href="#">O96GX9</a>
Other Accession	<a href="#">NM_015957</a> , <a href="#">NP_057041</a>
Reactivity	Human, Mouse, Rat, Rabbit, Pig, Horse, Yeast, Bovine, Guinea Pig, Dog
Predicted	Human, Mouse, Rat, Rabbit, Chicken, Horse, Guinea Pig, Dog
Host	Rabbit
Clonality	Polyclonal
Calculated MW	27kDa KDa

**APIP antibody - middle region - Additional Information**

**Gene ID** 51074

**Alias Symbol** **APIP2, CGI-29, MMRP19, dj179L10.2, CGI29**

**Other Names**

Methylthioribulose-1-phosphate dehydratase {ECO:0000255|HAMAP-Rule:MF\_03116}, MTRu-1-P dehydratase {ECO:0000255|HAMAP-Rule:MF\_03116}, 4.2.1.109 {ECO:0000255|HAMAP-Rule:MF\_03116}, APAF1-interacting protein {ECO:0000255|HAMAP-Rule:MF\_03116}, hAPIP, APIP {ECO:0000255|HAMAP-Rule:MF\_03116}

**Format**

Liquid. Purified antibody supplied in 1x PBS buffer with 0.09% (w/v) sodium azide and 2% sucrose.

**Reconstitution & Storage**

Add 50 ul of distilled water. Final anti-APIP antibody concentration is 1 mg/ml in PBS buffer with 2% sucrose. For longer periods of storage, store at 20°C. Avoid repeat freeze-thaw cycles.

**Precautions**

APIP antibody - middle region is for research use only and not for use in diagnostic or therapeutic procedures.

**APIP antibody - middle region - Protein Information**

**Name** APIP {ECO:0000255|HAMAP-Rule:MF\_03116}

**Function**

Catalyzes the dehydration of methylthioribulose-1-phosphate (MTRu-1-P) into 2,3-diketo-5-methylthiopentyl-1-phosphate (DK-MTP-1-P). Functions in the methionine salvage pathway, which plays a key role in cancer, apoptosis, microbial proliferation and inflammation. May inhibit the CASP1-related inflammatory response (pyroptosis), the CASP9-dependent apoptotic

pathway and the cytochrome c-dependent and APAF1-mediated cell death.

#### Cellular Location

Cytoplasm {ECO:0000255|HAMAP-Rule:MF\_03116, ECO:0000269|PubMed:15262985, ECO:0000269|PubMed:23285211}

#### Tissue Location

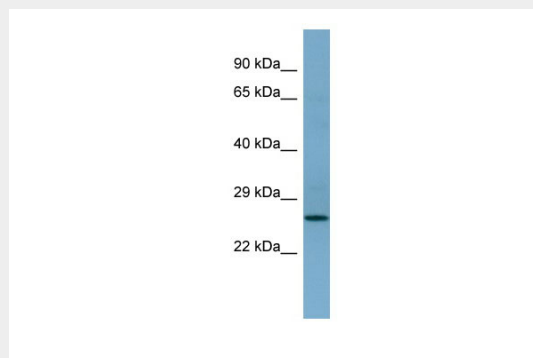
Isoform 1 is ubiquitously expressed. Isoform 2 is expressed at lower levels and detected in heart, brain, pancreas, liver, placenta, skeletal muscle and kidney

### APIP antibody - middle region - Protocols

Provided below are standard protocols that you may find useful for product applications.

- [Western Blot](#)
- [Blocking Peptides](#)
- [Dot Blot](#)
- [Immunohistochemistry](#)
- [Immunofluorescence](#)
- [Immunoprecipitation](#)
- [Flow Cytometry](#)
- [Cell Culture](#)

### APIP antibody - middle region - Images



WB Suggested Anti-APIP Antibody Titration: 0.2-1 µg/ml

ELISA Titer: 1:312500

Positive Control: 721\_B cell lysate

APIP is supported by BioGPS gene expression data to be expressed in 721\_B

### APIP antibody - middle region - References

- Lai C.-H., et al. *Genome Res.* 10:703-713(2000).  
Ota T., et al. *Nat. Genet.* 36:40-45(2004).  
Taylor T.D., et al. *Nature* 440:497-500(2006).  
Cho D.-H., et al. *J. Biol. Chem.* 279:39942-39950(2004).  
Burkard T.R., et al. *BMC Syst. Biol.* 5:17-17(2011).