

TRMT6 antibody - middle region
Rabbit Polyclonal Antibody
Catalog # AI14001**Specification**

TRMT6 antibody - middle region - Product Information

Application	WB
Primary Accession	O9UJA5
Other Accession	NM_015939 , NP_057023
Reactivity	Human, Mouse, Rat, Rabbit, Pig, Horse, Bovine, Guinea Pig, Dog
Predicted	Human, Mouse, Rat, Rabbit, Pig, Horse, Dog
Host	Rabbit
Clonality	Polyclonal
Calculated MW	56kDa KDa

TRMT6 antibody - middle region - Additional Information**Gene ID** 51605**Alias Symbol** CGI-09, GCD10, Gcd10p, MGC5029**Other Names**

tRNA (adenine(58)-N(1))-methyltransferase non-catalytic subunit TRM6, tRNA(m1A58)-methyltransferase subunit TRM6, tRNA(m1A58)MTase subunit TRM6, TRMT6, KIAA1153, TRM6

Format

Liquid. Purified antibody supplied in 1x PBS buffer with 0.09% (w/v) sodium azide and 2% sucrose.

Reconstitution & Storage

Add 50 ul of distilled water. Final anti-TRMT6 antibody concentration is 1 mg/ml in PBS buffer with 2% sucrose. For longer periods of storage, store at 20°C. Avoid repeat freeze-thaw cycles.

Precautions

TRMT6 antibody - middle region is for research use only and not for use in diagnostic or therapeutic procedures.

TRMT6 antibody - middle region - Protein Information**Name** TRMT6**Synonyms** KIAA1153, TRM6**Function**

Substrate-binding subunit of tRNA (adenine-N(1))- methyltransferase, which catalyzes the formation of N(1)-methyladenine at position 58 (m1A58) in initiator methionyl-tRNA (PubMed:16043508). Together

with the TRMT61A catalytic subunit, part of a mRNA N(1)-methyltransferase complex that mediates methylation of adenosine residues at the N(1) position of a small subset of mRNAs: N(1) methylation takes place in tRNA T-loop-like structures of mRNAs and is only present at low stoichiometries (PubMed: [29072297](http://www.uniprot.org/citations/29072297), PubMed: [29107537](http://www.uniprot.org/citations/29107537)).

Cellular Location

Nucleus {ECO:0000250|UniProtKB:P41814}.

Tissue Location

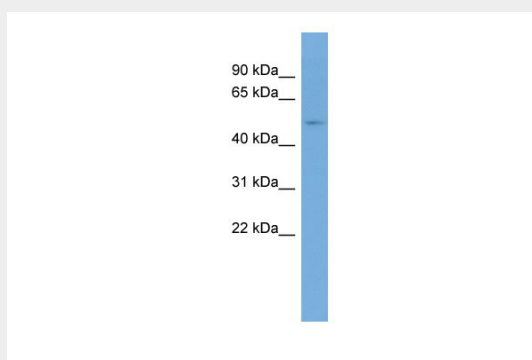
Expressed in brain, liver, testis and ovary.

TRMT6 antibody - middle region - Protocols

Provided below are standard protocols that you may find useful for product applications.

- [Western Blot](#)
- [Blocking Peptides](#)
- [Dot Blot](#)
- [Immunohistochemistry](#)
- [Immunofluorescence](#)
- [Immunoprecipitation](#)
- [Flow Cytometry](#)
- [Cell Culture](#)

TRMT6 antibody - middle region - Images



WB Suggested Anti-TRMT6 Antibody Titration: 0.2-1 μ g/ml

ELISA Titer: 1:62500

Positive Control: PANC1 cell lysate

TRMT6 antibody - middle region - References

- Hirosawa M., et al. DNA Res. 6:329-336(1999).
Lai C.-H., et al. Genome Res. 10:703-713(2000).
Ota T., et al. Nat. Genet. 36:40-45(2004).
Deloukas P., et al. Nature 414:865-871(2001).
Ozanick S., et al. RNA 11:1281-1290(2005).