

**RPE antibody - middle region**  
**Rabbit Polyclonal Antibody**  
**Catalog # AI13993**

**Specification**

---

**RPE antibody - middle region - Product Information**

Application	IHC, WB
Primary Accession	<a href="#">O96AT9</a>
Other Accession	<a href="#">NM_006915</a> , <a href="#">NP_954699</a>
Reactivity	Human, Mouse, Rat, Rabbit, Pig, Horse, Bovine, Guinea Pig, Dog
Predicted	Human, Mouse, Rat, Rabbit, Chicken, Horse, Bovine, Dog
Host	Rabbit
Clonality	Polyclonal
Calculated MW	25kDa KDa

**RPE antibody - middle region - Additional Information**

**Gene ID** 6120

**Alias Symbol** MGC2636, RPE2-1  
**Other Names**  
Ribulose-phosphate 3-epimerase, 5.1.3.1, Ribulose-5-phosphate-3-epimerase, RPE

**Format**

Liquid. Purified antibody supplied in 1x PBS buffer with 0.09% (w/v) sodium azide and 2% sucrose.

**Reconstitution & Storage**

Add 50 ul of distilled water. Final anti-RPE antibody concentration is 1 mg/ml in PBS buffer with 2% sucrose. For longer periods of storage, store at 20°C. Avoid repeat freeze-thaw cycles.

**Precautions**

RPE antibody - middle region is for research use only and not for use in diagnostic or therapeutic procedures.

**RPE antibody - middle region - Protein Information**

**Name** RPE

**Function**

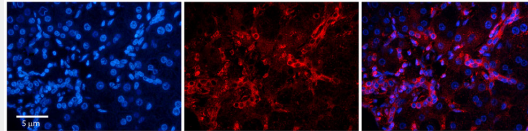
Catalyzes the reversible epimerization of D-ribulose 5- phosphate to D-xylulose 5-phosphate.

**RPE antibody - middle region - Protocols**

Provided below are standard protocols that you may find useful for product applications.

- [Western Blot](#)
- [Blocking Peptides](#)
- [Dot Blot](#)
- [Immunohistochemistry](#)
- [Immunofluorescence](#)
- [Immunoprecipitation](#)
- [Flow Cytometry](#)
- [Cell Culture](#)

#### RPE antibody - middle region - Images



Rabbit Anti-RPE Antibody

Catalog Number: AI13993

Formalin Fixed Paraffin Embedded Tissue: Human Adult Liver Observed Staining: Cytoplasm but only in connective tissue cells in the interlobular septum, very low tissue distribution

Primary Antibody

Concentration: 1:100

Secondary Antibody: Donkey anti-Rabbit-Cy3

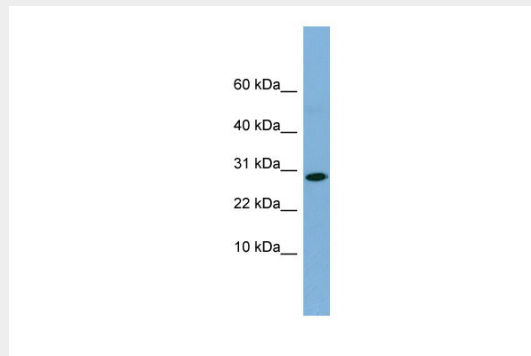
Secondary Antibody

Concentration: 1:200

Magnification: 20X

Exposure Time: 0.5 - 2.0 sec

Protocol located in Reviews and Data.



WB Suggested Anti-RPE Antibody Titration: 0.2-1 µg/ml

ELISA Titer: 1:312500

Positive Control: Human Muscle

#### RPE antibody - middle region - References

Ota T., et al. Nat. Genet. 36:40-45(2004).

Hillier L.W., et al. Nature 434:724-731(2005).

Mural R.J., et al. Submitted (JUL-2005) to the EMBL/GenBank/DDBJ databases.

Stanchi F., et al. Yeast 18:69-80(2001).

Burkard T.R., et al. BMC Syst. Biol. 5:17-17(2011).