

SCO1 Antibody - C-terminal region
Rabbit Polyclonal Antibody
Catalog # AI13969**Specification**

SCO1 Antibody - C-terminal region - Product Information

Application	WB
Primary Accession	O75880
Reactivity	Human
Predicted	Human, Mouse, Rat, Rabbit, Pig, Horse, Bovine, Guinea Pig
Host	Rabbit
Clonality	Polyclonal
Calculated MW	33kDa KDa

SCO1 Antibody - C-terminal region - Additional Information**Gene ID** 6341**Alias Symbol** SCO1, SCOD1,
Other Names
Protein SCO1 homolog, mitochondrial, SCO1, SCOD1**Format**

Liquid. Purified antibody supplied in 1x PBS buffer with 0.09% (w/v) sodium azide and 2% sucrose.

Reconstitution & Storage

Add 50 µl of distilled water. Final Anti-SCO1 antibody concentration is 1 mg/ml in PBS buffer with 2% sucrose. For longer periods of storage, store at -20°C. Avoid repeat freeze-thaw cycles.

Precautions

SCO1 Antibody - C-terminal region is for research use only and not for use in diagnostic or therapeutic procedures.

SCO1 Antibody - C-terminal region - Protein Information**Name** SCO1**Synonyms** SCOD1**Function**Copper metallochaperone essential for the maturation of cytochrome c oxidase subunit II (MT-CO2/COX2). Not required for the synthesis of MT-CO2/COX2 but plays a crucial role in stabilizing MT-CO2/COX2 during its subsequent maturation. Involved in transporting copper to the Cu(A) site on MT-CO2/COX2 (PubMed: [15229189](http://www.uniprot.org/citations/15229189), PubMed: [15659396](http://www.uniprot.org/citations/15659396), PubMed: [16735468](http://www.uniprot.org/citations/16735468), PubMed: [17189203](http://www.uniprot.org/citations/17189203))

target="_blank">17189203, PubMed:19336478). Plays an important role in the regulation of copper homeostasis by controlling the abundance and cell membrane localization of copper transporter CTR1 (By similarity).

Cellular Location

Mitochondrion. Mitochondrion inner membrane; Single-pass membrane protein

Tissue Location

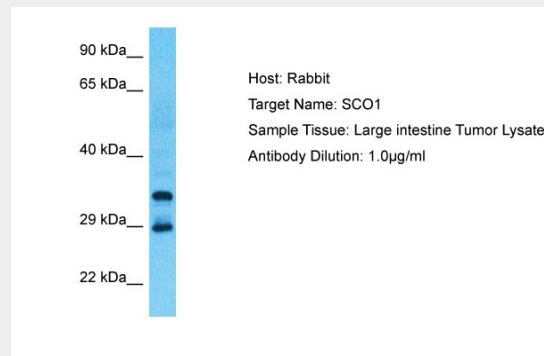
Predominantly expressed in tissues characterized by high rates of oxidative phosphorylation (OxPhos), including muscle, heart, and brain.

SCO1 Antibody - C-terminal region - Protocols

Provided below are standard protocols that you may find useful for product applications.

- [Western Blot](#)
- [Blocking Peptides](#)
- [Dot Blot](#)
- [Immunohistochemistry](#)
- [Immunofluorescence](#)
- [Immunoprecipitation](#)
- [Flow Cytometry](#)
- [Cell Culture](#)

SCO1 Antibody - C-terminal region - Images



Host: Rabbit
Target Name: SCO1
Sample Tissue: Large intestine Tumor lysates
Antibody Dilution: 1.0µg/ml

SCO1 Antibody - C-terminal region - References

Petruzzella V., et al. Genomics 54:494-504(1998).
Horvath R., et al. Biochem. Biophys. Res. Commun. 276:530-533(2000).
Peng Y., et al. Submitted (SEP-1999) to the EMBL/GenBank/DDBJ databases.
Ota T., et al. Nat. Genet. 36:40-45(2004).
Mural R.J., et al. Submitted (SEP-2005) to the EMBL/GenBank/DDBJ databases.