

SH3GL2 antibody - N-terminal region
Rabbit Polyclonal Antibody
Catalog # AI13960**Specification**

SH3GL2 antibody - N-terminal region - Product Information

Application	WB
Primary Accession	O99962
Other Accession	NM_003026 , NP_003017
Reactivity	Human, Mouse, Rat, Rabbit, Pig, Horse, Bovine, Guinea Pig, Dog
Predicted	Human, Mouse, Rat, Rabbit, Chicken, Horse, Bovine, Guinea Pig
Host	Rabbit
Clonality	Polyclonal
Calculated MW	40kDa KDa

SH3GL2 antibody - N-terminal region - Additional Information**Gene ID** 6456**Alias Symbol** CNSA2, EEN-B1, FLJ20276, FLJ25015, SH3D2A, SH3P4**Other Names**

Endophilin-A1, EEN-B1, Endophilin-1, SH3 domain protein 2A, SH3 domain-containing GRB2-like protein 2, SH3GL2, CNSA2, SH3D2A

Format

Liquid. Purified antibody supplied in 1x PBS buffer with 0.09% (w/v) sodium azide and 2% sucrose.

Reconstitution & Storage

Add 50 ul of distilled water. Final anti-SH3GL2 antibody concentration is 1 mg/ml in PBS buffer with 2% sucrose. For longer periods of storage, store at 20°C. Avoid repeat freeze-thaw cycles.

Precautions

SH3GL2 antibody - N-terminal region is for research use only and not for use in diagnostic or therapeutic procedures.

SH3GL2 antibody - N-terminal region - Protein Information**Name** SH3GL2**Synonyms** CNSA2, SH3D2A**Function**

Implicated in synaptic vesicle endocytosis. May recruit other proteins to membranes with high curvature. Required for BDNF-dependent dendrite outgrowth. Cooperates with SH3GL2 to mediate BDNF-NTRK2 early endocytic trafficking and signaling from early endosomes.

Cellular Location

Cytoplasm {ECO:0000250|UniProtKB:O35179}. Membrane {ECO:0000250|UniProtKB:O35179};
Peripheral membrane protein {ECO:0000250|UniProtKB:O35179}. Early endosome
{ECO:0000250|UniProtKB:Q62420}. Presynapse {ECO:0000250|UniProtKB:O35179}

Tissue Location

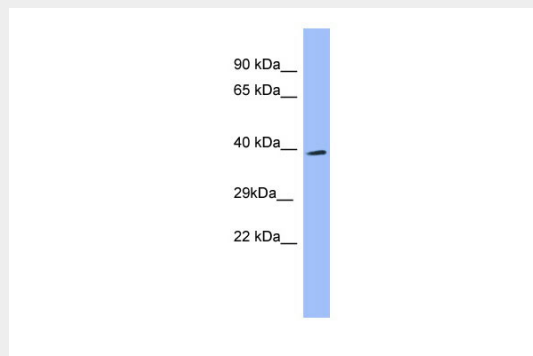
Brain, mostly in frontal cortex. Expressed at high level in fetal cerebellum

SH3GL2 antibody - N-terminal region - Protocols

Provided below are standard protocols that you may find useful for product applications.

- [Western Blot](#)
- [Blocking Peptides](#)
- [Dot Blot](#)
- [Immunohistochemistry](#)
- [Immunofluorescence](#)
- [Immunoprecipitation](#)
- [Flow Cytometry](#)
- [Cell Culture](#)

SH3GL2 antibody - N-terminal region - Images



WB Suggested Anti-SH3GL2 Antibody Titration: 0.2-1 µg/ml
ELISA Titer: 1:1562500
Positive Control: Human Placenta

SH3GL2 antibody - N-terminal region - References

Giachino C., et al. Genomics 41:427-434(1997).
So C.W., et al. Submitted (MAR-1998) to the EMBL/GenBank/DDBJ databases.
Halleck A., et al. Submitted (JUN-2004) to the EMBL/GenBank/DDBJ databases.
Kalnina N., et al. Submitted (OCT-2004) to the EMBL/GenBank/DDBJ databases.
Ota T., et al. Nat. Genet. 36:40-45(2004).