

PGM1 antibody - middle region
Rabbit Polyclonal Antibody
Catalog # AI13940**Specification**

PGM1 antibody - middle region - Product Information

Application	WB
Primary Accession	P36871
Other Accession	NM_002633 , NP_002624
Reactivity	Human, Mouse, Rat, Rabbit, Goat, Horse, Bovine, Guinea Pig, Dog
Predicted	Human, Mouse, Rat, Rabbit, Pig, Chicken, Horse, Bovine, Dog
Host	Rabbit
Clonality	Polyclonal
Calculated MW	61kDa KDa

PGM1 antibody - middle region - Additional Information**Gene ID** 5236**Alias Symbol** **GSD14**
Other Names
Phosphoglucomutase-1, PGM 1, 5.4.2.2, Glucose phosphomutase 1, PGM1**Format**

Liquid. Purified antibody supplied in 1x PBS buffer with 0.09% (w/v) sodium azide and 2% sucrose.

Reconstitution & Storage

Add 50 ul of distilled water. Final anti-PGM1 antibody concentration is 1 mg/ml in PBS buffer with 2% sucrose. For longer periods of storage, store at 20°C. Avoid repeat freeze-thaw cycles.

Precautions

PGM1 antibody - middle region is for research use only and not for use in diagnostic or therapeutic procedures.

PGM1 antibody - middle region - Protein Information**Name** PGM1**Function**Catalyzes the reversible isomerization of alpha-D-glucose 1- phosphate to alpha-D-glucose 6-phosphate (PubMed: [15378030](http://www.uniprot.org/citations/15378030), PubMed: [25288802](http://www.uniprot.org/citations/25288802)). The mechanism proceeds via the intermediate compound alpha-D-glucose 1,6-bisphosphate (Probable) (PubMed: [25288802](http://www.uniprot.org/citations/25288802)). This enzyme participates in both the breakdown and synthesis of glucose (PubMed:

href="http://www.uniprot.org/citations/17924679" target="_blank">17924679, PubMed:25288802).

Cellular Location

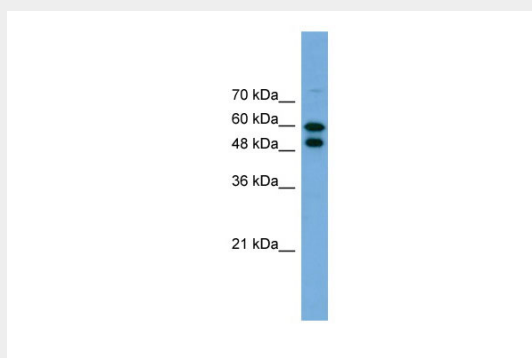
[Isoform 1]: Cytoplasm.

PGM1 antibody - middle region - Protocols

Provided below are standard protocols that you may find useful for product applications.

- [Western Blot](#)
- [Blocking Peptides](#)
- [Dot Blot](#)
- [Immunohistochemistry](#)
- [Immunofluorescence](#)
- [Immunoprecipitation](#)
- [Flow Cytometry](#)
- [Cell Culture](#)

PGM1 antibody - middle region - Images



WB Suggested Anti-PGM1 Antibody Titration: 1.0 µg/ml

Positive Control: Transfected 293T

PGM1 antibody - middle region - References

- Whitehouse D.B., et al. Proc. Natl. Acad. Sci. U.S.A. 89:411-415(1992).
Kalnine N., et al. Submitted (MAY-2003) to the EMBL/GenBank/DDBJ databases.
Ota T., et al. Nat. Genet. 36:40-45(2004).
Gregory S.G., et al. Nature 441:315-321(2006).
Putt W., et al. Biochem. J. 296:417-422(1993).