

Pde2a antibody - N-terminal region
Rabbit Polyclonal Antibody
Catalog # AI13939

Specification

Pde2a antibody - N-terminal region - Product Information

Application	WB
Primary Accession	Q01062
Other Accession	NM_001143847 , NP_001137319
Reactivity	Human, Mouse, Rat, Bovine, Guinea Pig, Dog
Predicted Host	Human, Mouse, Rat, Bovine, Dog
Clonality	Rabbit
Calculated MW	Polyclonal 104kDa KDa

Pde2a antibody - N-terminal region - Additional Information

Gene ID 81743

Alias Symbol Pde2, Pde2a2, Pde2a

Other Names

cGMP-dependent 3', 5'-cyclic phosphodiesterase, 3.1.4.17, Cyclic GMP-stimulated phosphodiesterase, CGS-PDE, cGSPDE, Pde2a

Format

Liquid. Purified antibody supplied in 1x PBS buffer with 0.09% (w/v) sodium azide and 2% sucrose.

Reconstitution & Storage

Add 50 ul of distilled water. Final anti-Pde2a antibody concentration is 1 mg/ml in PBS buffer with 2% sucrose. For longer periods of storage, store at 20°C. Avoid repeat freeze-thaw cycles.

Precautions

Pde2a antibody - N-terminal region is for research use only and not for use in diagnostic or therapeutic procedures.

Pde2a antibody - N-terminal region - Protein Information

Name Pde2a {ECO:0000312|RGD:620965}

Function

cGMP-activated cyclic nucleotide phosphodiesterase with a dual-specificity for the second messengers cAMP and cGMP, which are key regulators of many important physiological processes. Has a higher efficiency with cGMP compared to cAMP (By similarity). Plays a role in cell growth and migration (By similarity).

Cellular Location

[Isoform PDE2A3]: Cell membrane {ECO:0000250|UniProtKB:O00408}; Peripheral membrane

protein [Isoform PDE2A2]: Mitochondrion matrix. Mitochondrion inner membrane. Mitochondrion outer membrane

Tissue Location

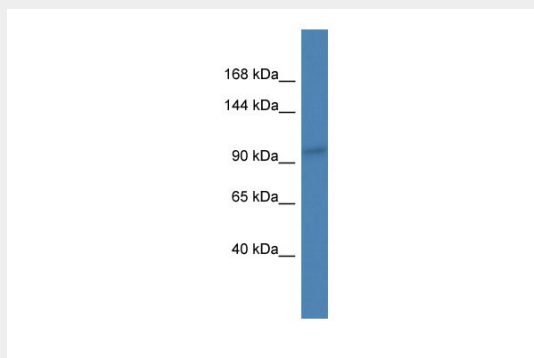
Expressed in brain and liver.

Pde2a antibody - N-terminal region - Protocols

Provided below are standard protocols that you may find useful for product applications.

- [Western Blot](#)
- [Blocking Peptides](#)
- [Dot Blot](#)
- [Immunohistochemistry](#)
- [Immunofluorescence](#)
- [Immunoprecipitation](#)
- [Flow Cytometry](#)
- [Cell Culture](#)

Pde2a antibody - N-terminal region - Images



WB Suggested Anti-Pde2a Antibody Titration: 1.0 μ g/ml

Positive Control: Rat Brain

Pde2a antibody - N-terminal region - References

Yang Q., et al. Biochem. Biophys. Res. Commun. 205:1850-1858(1994).
Repaske D.R., et al. J. Biol. Chem. 267:18683-18688(1992).