

PAFAH1B3 antibody - middle region
Rabbit Polyclonal Antibody
Catalog # AI13937

Specification

PAFAH1B3 antibody - middle region - Product Information

Application	WB
Primary Accession	Q15102
Other Accession	NM_014226 , NP_002564
Reactivity	Human, Mouse, Rat, Rabbit, Pig, Horse, Bovine, Guinea Pig, Dog
Predicted Host	Mouse, Guinea Pig, Dog
Clonality	Rabbit
Calculated MW	Polyclonal 26kDa KDa

PAFAH1B3 antibody - middle region - Additional Information

Gene ID 5050

Alias Symbol PAFAHG

Other Names

Platelet-activating factor acetylhydrolase IB subunit gamma, 3.1.1.47, PAF acetylhydrolase 29 kDa subunit, PAF-AH 29 kDa subunit, PAF-AH subunit gamma, PAFAH subunit gamma, PAFAH1B3, PAFAHG

Format

Liquid. Purified antibody supplied in 1x PBS buffer with 0.09% (w/v) sodium azide and 2% sucrose.

Reconstitution & Storage

Add 50 ul of distilled water. Final anti-PAFAH1B3 antibody concentration is 1 mg/ml in PBS buffer with 2% sucrose. For longer periods of storage, store at 20°C. Avoid repeat freeze-thaw cycles.

Precautions

PAFAH1B3 antibody - middle region is for research use only and not for use in diagnostic or therapeutic procedures.

PAFAH1B3 antibody - middle region - Protein Information

Name PAFAH1B3 ([HGNC:8576](#))

Synonyms PAFAHG

Function

Alpha1 catalytic subunit of the cytosolic type I platelet- activating factor (PAF) acetylhydrolase (PAF-AH (I)) heterotetrameric enzyme that catalyzes the hydrolyze of the acetyl group at the sn-2 position of PAF and its analogs and modulates the action of PAF. The activity and substrate specificity of PAF-AH (I) are affected by its subunit composition. Both alpha1/alpha1 homodimer

(PAFAH1B3/PAFAH1B3 homodimer) and alpha1/alpha2 heterodimer(PAFAH1B3/PAFAH1B2 heterodimer) hydrolyze 1-O-alkyl-2-acetyl-sn-glycero-3-phosphoric acid (AAGPA) more efficiently than PAF, but they have little hydrolytic activity towards 1-O-alkyl-2-acetyl-sn-glycero-3-phosphorylethanolamine (AAGPE). Plays an important role during the development of brain.

Cellular Location

Cytoplasm.

Tissue Location

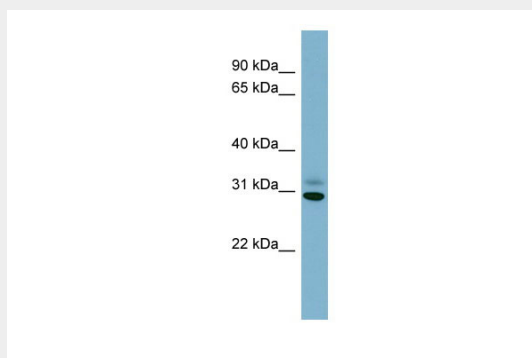
In the adult, expressed in brain, skeletal muscle, kidney, thymus, spleen, colon, testis, ovary and peripheral blood leukocytes. In the fetus, highest expression occurs in brain

PAFAH1B3 antibody - middle region - Protocols

Provided below are standard protocols that you may find useful for product applications.

- [Western Blot](#)
- [Blocking Peptides](#)
- [Dot Blot](#)
- [Immunohistochemistry](#)
- [Immunofluorescence](#)
- [Immunoprecipitation](#)
- [Flow Cytometry](#)
- [Cell Culture](#)

PAFAH1B3 antibody - middle region - Images



WB Suggested Anti-PAFAH1B3 Antibody Titration: 0.2-1 μ g/ml

ELISA Titer: 1:1562500

Positive Control: 293T cell lysate

PAFAH1B3 antibody - middle region - References

Adachi H.,et al.Biochem. Biophys. Res. Commun. 214:180-187(1995).
Ebert L.,et al.Submitted (MAY-2004) to the EMBL/GenBank/DDBJ databases.
Grimwood J.,et al.Nature 428:529-535(2004).
Mural R.J.,et al.Submitted (JUL-2005) to the EMBL/GenBank/DDBJ databases.
Lubec G.,et al.Submitted (DEC-2008) to UniProtKB.