

**EXOC4 antibody - N-terminal region**  
**Rabbit Polyclonal Antibody**  
**Catalog # AI13920****Specification**

---

**EXOC4 antibody - N-terminal region - Product Information**

Application	WB
Primary Accession	<a href="#">O96A65</a>
Other Accession	<a href="#">NM_001037126</a> , <a href="#">NP_001032203</a>
Reactivity	Human, Mouse, Rat, Rabbit, Pig, Horse, Bovine, Dog
Predicted	Human, Mouse, Rat, Pig, Chicken, Horse, Bovine
Host	Rabbit
Clonality	Polyclonal
Calculated MW	54kDa kDa

**EXOC4 antibody - N-terminal region - Additional Information****Gene ID** 60412**Alias Symbol** **MGC27170, REC8, SEC8, SEC8L1, Sec8p****Other Names**

Exocyst complex component 4, Exocyst complex component Sec8, EXOC4, KIAA1699, SEC8, SEC8L1

**Format**

Liquid. Purified antibody supplied in 1x PBS buffer with 0.09% (w/v) sodium azide and 2% sucrose.

**Reconstitution & Storage**

Add 50 ul of distilled water. Final anti-EXOC4 antibody concentration is 1 mg/ml in PBS buffer with 2% sucrose. For longer periods of storage, store at 20°C. Avoid repeat freeze-thaw cycles.

**Precautions**

EXOC4 antibody - N-terminal region is for research use only and not for use in diagnostic or therapeutic procedures.

**EXOC4 antibody - N-terminal region - Protein Information****Name** EXOC4**Synonyms** KIAA1699, SEC8, SEC8L1**Function**

Component of the exocyst complex involved in the docking of exocytic vesicles with fusion sites on the plasma membrane.

**Cellular Location**

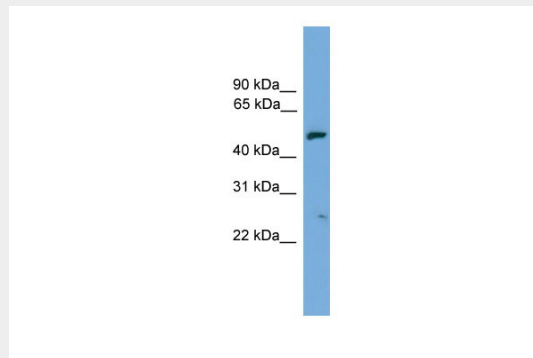
Midbody, Midbody ring. Cell projection {ECO:0000250|UniProtKB:Q62824}. Cytoplasm, cytoskeleton, microtubule organizing center, centrosome Note=Colocalizes with CNTRL/centriolin at the midbody ring (PubMed:16213214). Localizes at the leading edge of migrating cells (By similarity). {ECO:0000250|UniProtKB:Q62824, ECO:0000269|PubMed:16213214}

### **EXOC4 antibody - N-terminal region - Protocols**

Provided below are standard protocols that you may find useful for product applications.

- [Western Blot](#)
- [Blocking Peptides](#)
- [Dot Blot](#)
- [Immunohistochemistry](#)
- [Immunofluorescence](#)
- [Immunoprecipitation](#)
- [Flow Cytometry](#)
- [Cell Culture](#)

### **EXOC4 antibody - N-terminal region - Images**



WB Suggested Anti-EXOC4 Antibody Titration: 0.2-1 µg/ml  
ELISA Titer: 1:312500  
Positive Control: Human Placenta

### **EXOC4 antibody - N-terminal region - References**

Sha J.H., et al. Submitted (MAY-2001) to the EMBL/GenBank/DDBJ databases.  
Ota T., et al. Nat. Genet. 36:40-45(2004).  
Bechtel S., et al. BMC Genomics 8:399-399(2007).  
Scherer S.W., et al. Science 300:767-772(2003).  
Hillier L.W., et al. Nature 424:157-164(2003).