

CCDC157 antibody - middle region
Rabbit Polyclonal Antibody
Catalog # AI13918**Specification**

CCDC157 antibody - middle region - Product Information

Application	WB
Primary Accession	Q569K6
Other Accession	NM_001017437 , NP_001017437
Reactivity	Human, Mouse, Rat, Rabbit, Pig, Horse, Bovine, Guinea Pig, Dog
Predicted	Human, Mouse, Rat, Pig, Horse, Guinea Pig, Dog
Host	Rabbit
Clonality	Polyclonal
Calculated MW	83kDa KDa

CCDC157 antibody - middle region - Additional Information**Gene ID** 550631**Other Names**

Coiled-coil domain-containing protein 157, CCDC157, KIAA1656

Format

Liquid. Purified antibody supplied in 1x PBS buffer with 0.09% (w/v) sodium azide and 2% sucrose.

Reconstitution & Storage

Add 50 ul of distilled water. Final anti-CCDC157 antibody concentration is 1 mg/ml in PBS buffer with 2% sucrose. For longer periods of storage, store at 20°C. Avoid repeat freeze-thaw cycles.

Precautions

CCDC157 antibody - middle region is for research use only and not for use in diagnostic or therapeutic procedures.

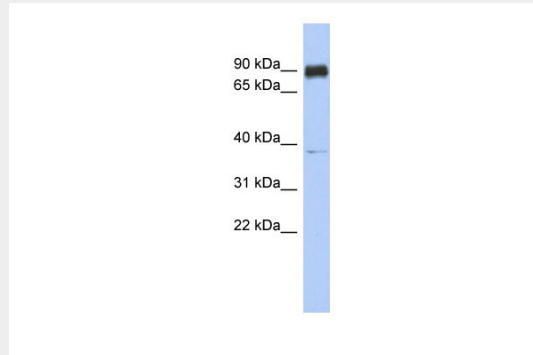
CCDC157 antibody - middle region - Protein Information**Name** CCDC157**Synonyms** KIAA1656**CCDC157 antibody - middle region - Protocols**

Provided below are standard protocols that you may find useful for product applications.

- [Western Blot](#)

- [Blocking Peptides](#)
- [Dot Blot](#)
- [Immunohistochemistry](#)
- [Immunofluorescence](#)
- [Immunoprecipitation](#)
- [Flow Cytometry](#)
- [Cell Culture](#)

CCDC157 antibody - middle region - Images



WB Suggested Anti-CCDC157 Antibody Titration: 0.2-1 µg/ml
ELISA Titer: 1:1562500
Positive Control: Human heart

CCDC157 antibody - middle region - References

Dunham I., et al. Nature 402:489-495(1999).
Hirosawa M., et al. DNA Res. 8:1-9(2001).