

RPS7 antibody - N-terminal region
Rabbit Polyclonal Antibody
Catalog # AI13907**Specification**

RPS7 antibody - N-terminal region - Product Information

Application	WB
Primary Accession	P62081
Other Accession	NM_001011 , NP_001002
Reactivity	Human, Mouse, Rat, Rabbit, Pig, Dog
Predicted	Human, Mouse, Rat, Chicken, Guinea Pig, Dog
Host	Rabbit
Clonality	Polyclonal
Calculated MW	22kDa KDa

RPS7 antibody - N-terminal region - Additional Information**Gene ID** 6201**Alias Symbol** S7, DBA8
Other Names
40S ribosomal protein S7, RPS7**Format**

Liquid. Purified antibody supplied in 1x PBS buffer with 0.09% (w/v) sodium azide and 2% sucrose.

Reconstitution & Storage

Add 50 ul of distilled water. Final anti-RPS7 antibody concentration is 1 mg/ml in PBS buffer with 2% sucrose. For longer periods of storage, store at 20°C. Avoid repeat freeze-thaw cycles.

Precautions

RPS7 antibody - N-terminal region is for research use only and not for use in diagnostic or therapeutic procedures.

RPS7 antibody - N-terminal region - Protein Information**Name** RPS7 ([HGNC:10440](#))**Function**

Component of the small ribosomal subunit (PubMed: 23636399). The ribosome is a large ribonucleoprotein complex responsible for the synthesis of proteins in the cell (PubMed: 23636399). Required for rRNA maturation (PubMed: 19061985). Part of the small subunit (SSU) processome, first precursor of the small eukaryotic ribosomal subunit. During the assembly of the SSU processome in the nucleolus, many ribosome biogenesis factors, an RNA chaperone and ribosomal proteins associate

with the nascent pre-rRNA and work in concert to generate RNA folding, modifications, rearrangements and cleavage as well as targeted degradation of pre-ribosomal RNA by the RNA exosome (PubMed:34516797).

Cellular Location

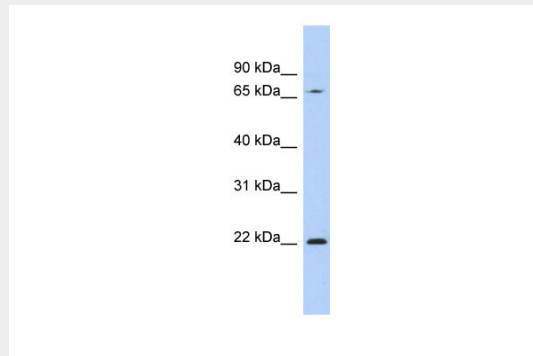
Cytoplasm, cytoskeleton, microtubule organizing center, centrosome. Cytoplasm. Nucleus, nucleolus Note=Although RPS7 is functional within the cytoplasm, the assembly of ribosomal subunits occurs in the nucleus. RPS7 nuclear import is mediated by IPO5/RanBP5, IPO7/RanBP7, KPNB1/importin-beta or TPNO1/Trn (PubMed:9687515). Colocalizes with NEK6 in the centrosome (PubMed:20873783).

RPS7 antibody - N-terminal region - Protocols

Provided below are standard protocols that you may find useful for product applications.

- [Western Blot](#)
- [Blocking Peptides](#)
- [Dot Blot](#)
- [Immunohistochemistry](#)
- [Immunofluorescence](#)
- [Immunoprecipitation](#)
- [Flow Cytometry](#)
- [Cell Culture](#)

RPS7 antibody - N-terminal region - Images



WB Suggested Anti-RPS7 Antibody Titration: 0.2-1 µg/ml
ELISA Titer: 1:12500
Positive Control: Human Placenta

RPS7 antibody - N-terminal region - References

- Annilo T., et al. Gene 165:297-302(1995).
Ota T., et al. Nat. Genet. 36:40-45(2004).
Hillier L.W., et al. Nature 434:724-731(2005).
Mural R.J., et al. Submitted (SEP-2005) to the EMBL/GenBank/DDBJ databases.
Vladimirov S.N., et al. Eur. J. Biochem. 239:144-149(1996).