

IER5L antibody - middle region
Rabbit Polyclonal Antibody
Catalog # AI13884

Specification

IER5L antibody - middle region - Product Information

Application	WB
Primary Accession	Q5T953
Other Accession	NM_203434 , NP_982258
Reactivity	Human, Mouse, Rat, Bovine, Guinea Pig, Dog
Predicted	Human, Mouse, Rat, Bovine, Guinea Pig, Dog
Host	Rabbit
Clonality	Polyclonal
Calculated MW	42kDa KDa

IER5L antibody - middle region - Additional Information

Gene ID 389792

Alias Symbol MGC70833, bA247A12.2

Other Names

Immediate early response gene 5-like protein, IER5L

Format

Liquid. Purified antibody supplied in 1x PBS buffer with 0.09% (w/v) sodium azide and 2% sucrose.

Reconstitution & Storage

Add 50 ul of distilled water. Final anti-IER5L antibody concentration is 1 mg/ml in PBS buffer with 2% sucrose. For longer periods of storage, store at 20°C. Avoid repeat freeze-thaw cycles.

Precautions

IER5L antibody - middle region is for research use only and not for use in diagnostic or therapeutic procedures.

IER5L antibody - middle region - Protein Information

Name IER5L

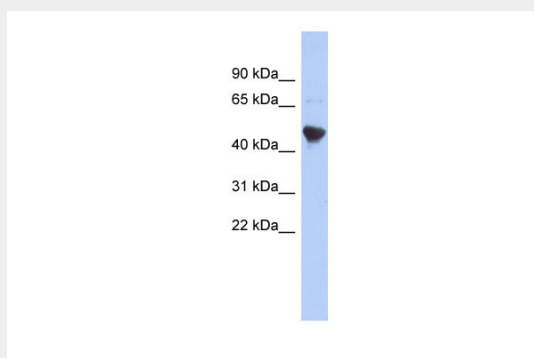
IER5L antibody - middle region - Protocols

Provided below are standard protocols that you may find useful for product applications.

- [Western Blot](#)
- [Blocking Peptides](#)

- [Dot Blot](#)
- [Immunohistochemistry](#)
- [Immunofluorescence](#)
- [Immunoprecipitation](#)
- [Flow Cytometry](#)
- [Cell Culture](#)

IER5L antibody - middle region - Images



WB Suggested Anti-IER5L Antibody Titration: 0.2-1 μ g/ml
ELISA Titer: 1:1562500
Positive Control: NCI-H226 cell lysate

IER5L antibody - middle region - References

Humphray S.J., et al. Nature 429:369-374(2004).
Mural R.J., et al. Submitted (JUL-2005) to the EMBL/GenBank/DDBJ databases.