

Ier5l antibody - C-terminal region
Rabbit Polyclonal Antibody
Catalog # AI13883**Specification**

Ier5l antibody - C-terminal region - Product Information

Application	WB
Primary Accession	O99J55
Other Accession	NM_030244 , NP_084520
Reactivity	Human, Mouse, Rat, Bovine, Guinea Pig, Dog
Predicted	Human, Mouse, Rat, Bovine, Guinea Pig, Dog
Host	Rabbit
Clonality	Polyclonal
Calculated MW	47kDa KDa

Ier5l antibody - C-terminal region - Additional Information**Gene ID** 72500**Alias Symbol** 2610524G09Rik**Other Names**

Immediate early response gene 5-like protein, Ier5l

Format

Liquid. Purified antibody supplied in 1x PBS buffer with 0.09% (w/v) sodium azide and 2% sucrose.

Reconstitution & Storage

Add 50 ul of distilled water. Final anti-Ier5l antibody concentration is 1 mg/ml in PBS buffer with 2% sucrose. For longer periods of storage, store at 20°C. Avoid repeat freeze-thaw cycles.

Precautions

Ier5l antibody - C-terminal region is for research use only and not for use in diagnostic or therapeutic procedures.

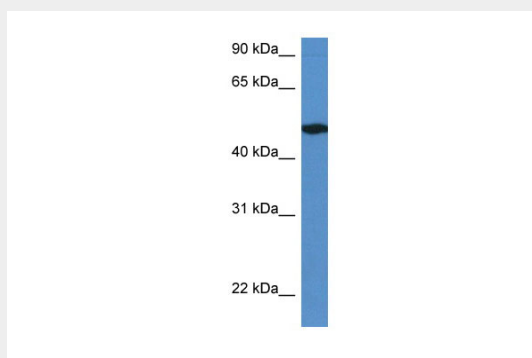
Ier5l antibody - C-terminal region - Protein Information**Name** Ier5l**Ier5l antibody - C-terminal region - Protocols**

Provided below are standard protocols that you may find useful for product applications.

- [Western Blot](#)
- [Blocking Peptides](#)

- [Dot Blot](#)
- [Immunohistochemistry](#)
- [Immunofluorescence](#)
- [Immunoprecipitation](#)
- [Flow Cytometry](#)
- [Cell Culture](#)

Ier5l antibody - C-terminal region - Images



WB Suggested Anti-Ier5l Antibody Titration: 1.0 µg/ml
Positive Control: Mouse Pancreas

Ier5l antibody - C-terminal region - References

Carninci P., et al. Science 309:1559-1563(2005).
Church D.M., et al. PLoS Biol. 7:E1000112-E1000112(2009).