

GCET2 antibody - middle region
Rabbit Polyclonal Antibody
Catalog # AI13815**Specification**

GCET2 antibody - middle region - Product Information

Application	WB
Primary Accession	Q8N6F7
Other Accession	NM_152785 , NP_689998
Reactivity	Human
Predicted	Human
Host	Rabbit
Clonality	Polyclonal
Calculated MW	21kDa KDa

GCET2 antibody - middle region - Additional Information**Gene ID** 257144**Alias Symbol** **GCAT2, HGAL, MGC40441, GCET2****Other Names**

Germinal center-associated signaling and motility protein, Germinal center B-cell-expressed transcript 2 protein, Germinal center-associated lymphoma protein, hGAL, GCSAM, GAL, GCET2

Format

Liquid. Purified antibody supplied in 1x PBS buffer with 0.09% (w/v) sodium azide and 2% sucrose.

Reconstitution & Storage

Add 50 ul of distilled water. Final anti-GCET2 antibody concentration is 1 mg/ml in PBS buffer with 2% sucrose. For longer periods of storage, store at 20°C. Avoid repeat freeze-thaw cycles.

Precautions

GCET2 antibody - middle region is for research use only and not for use in diagnostic or therapeutic procedures.

GCET2 antibody - middle region - Protein Information**Name** GCSAM**Synonyms** GAL, GCET2**Function**

Involved in the negative regulation of lymphocyte motility. It mediates the migration-inhibitory effects of IL6. Serves as a positive regulator of the RhoA signaling pathway. Enhancement of RhoA activation results in inhibition of lymphocyte and lymphoma cell motility by activation of its downstream effector ROCK. Is a regulator of B-cell receptor signaling, that acts through SYK kinase activation.

Cellular Location

Cytoplasm. Cell membrane. Note=It relocalizes from the cytoplasm to podosome-like structures upon cell treatment with IL6

Tissue Location

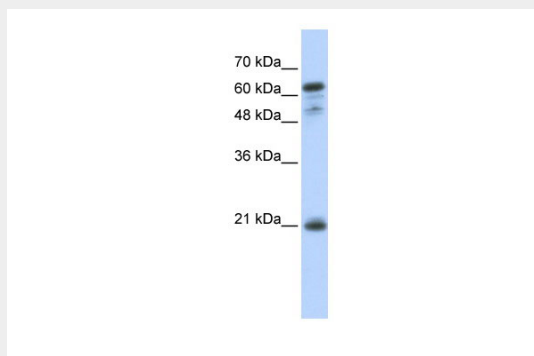
Expressed in diffuse large B-cell lymphoma (DLBCL) and several germinal center (GC)-like lymphoma cell lines (at protein level). Highly expressed in normal GC lymphocytes and GC-derived malignancies. Expressed in thymus and spleen

GCET2 antibody - middle region - Protocols

Provided below are standard protocols that you may find useful for product applications.

- [Western Blot](#)
- [Blocking Peptides](#)
- [Dot Blot](#)
- [Immunohistochemistry](#)
- [Immunofluorescence](#)
- [Immunoprecipitation](#)
- [Flow Cytometry](#)
- [Cell Culture](#)

GCET2 antibody - middle region - Images



WB Suggested Anti-GCET2 Antibody Titration: 0.2-1 μ g/ml

ELISA Titer: 1:62500

Positive Control: Transfected 293T

GCET2 antibody - middle region - References

- Pan Z., et al. Am. J. Pathol. 163:135-144(2003).
Lossos I.S., et al. Blood 101:433-440(2003).
Muzny D.M., et al. Nature 440:1194-1198(2006).
Natkunam Y., et al. Blood 105:3979-3986(2005).
Lu X., et al. Blood 110:4268-4277(2007).