

**IRF2BP1 antibody - middle region**  
**Rabbit Polyclonal Antibody**  
**Catalog # AI13776**

**Specification**

---

**IRF2BP1 antibody - middle region - Product Information**

Application	<b>WB</b>
Primary Accession	<a href="#">Q8IU81</a>
Other Accession	<a href="#">NM_015649</a> , <a href="#">NP_056464</a>
Reactivity	<b>Human, Mouse, Rat, Rabbit, Pig, Horse, Bovine, Guinea Pig, Dog</b>
Predicted	<b>Rat, Rabbit, Pig, Horse, Bovine, Guinea Pig, Dog</b>
Host	<b>Rabbit</b>
Clonality	<b>Polyclonal</b>
Calculated MW	<b>62kDa KDa</b>

**IRF2BP1 antibody - middle region - Additional Information**

**Gene ID** 26145

**Alias Symbol** **DKFZP434M154**

**Other Names**

Interferon regulatory factor 2-binding protein 1, IRF-2-binding protein 1, IRF-2BP1, Probable E3 ubiquitin-protein ligase IRF2BP1, 6.3.2.-, IRF2BP1

**Format**

Liquid. Purified antibody supplied in 1x PBS buffer with 0.09% (w/v) sodium azide and 2% sucrose.

**Reconstitution & Storage**

Add 50 ul of distilled water. Final anti-IRF2BP1 antibody concentration is 1 mg/ml in PBS buffer with 2% sucrose. For longer periods of storage, store at 20°C. Avoid repeat freeze-thaw cycles.

**Precautions**

IRF2BP1 antibody - middle region is for research use only and not for use in diagnostic or therapeutic procedures.

**IRF2BP1 antibody - middle region - Protein Information**

**Name** IRF2BP1

**Function**

Acts as a transcriptional corepressor in a IRF2-dependent manner; this repression is not mediated by histone deacetylase activities. May act as an E3 ligase towards JDP2, enhancing its polyubiquitination. Represses ATF2-dependent transcriptional activation.

**Cellular Location**

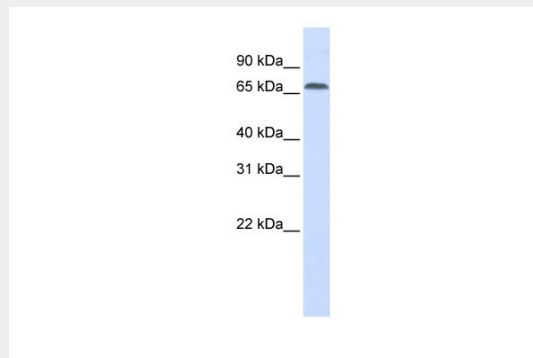
Nucleus.

## IRF2BP1 antibody - middle region - Protocols

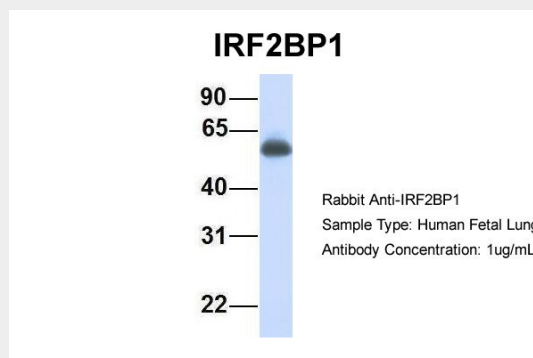
Provided below are standard protocols that you may find useful for product applications.

- [Western Blot](#)
- [Blocking Peptides](#)
- [Dot Blot](#)
- [Immunohistochemistry](#)
- [Immunofluorescence](#)
- [Immunoprecipitation](#)
- [Flow Cytometry](#)
- [Cell Culture](#)

## IRF2BP1 antibody - middle region - Images



WB Suggested Anti-IRF2BP1 Antibody Titration: 0.2-1 µg/ml  
ELISA Titer: 1:62500  
Positive Control: Human Placenta



Host:Rabbit  
Target Name:IRF2BP1  
Sample Tissue:Human Fetal Lung  
Antibody Dilution: 1.0µg/ml

## IRF2BP1 antibody - middle region - References

Childs K.S.,et al.Nucleic Acids Res. 31:3016-3026(2003).  
Totoki Y.,et al.Submitted (APR-2005) to the EMBL/GenBank/DDBJ databases.  
Mural R.J.,et al.Submitted (JUL-2005) to the EMBL/GenBank/DDBJ databases.  
Bechtel S.,et al.BMC Genomics 8:399-399(2007).  
Olsen J.V.,et al.Cell 127:635-648(2006).

