

FAM120A antibody - middle region
Rabbit Polyclonal Antibody
Catalog # AI13741**Specification**

FAM120A antibody - middle region - Product Information

Application	WB
Primary Accession	O9NZB2
Other Accession	NM_014612 , NP_055427
Reactivity	Human, Mouse, Rat, Rabbit, Pig, Horse, Bovine, Dog
Predicted Host	Rat, Rabbit, Pig, Chicken, Horse, Dog
Clonality	Rabbit
Calculated MW	Polyclonal 122kDa KDa

FAM120A antibody - middle region - Additional Information**Gene ID** 23196**Alias Symbol** C9orf10, DNAPTP1, DNAPTP5, MGC111527, MGC133257, OSSA**Other Names**

Constitutive coactivator of PPAR-gamma-like protein 1, Oxidative stress-associated Src activator, Protein FAM120A, FAM120A, C9orf10, KIAA0183, OSSA

Format

Liquid. Purified antibody supplied in 1x PBS buffer with 0.09% (w/v) sodium azide and 2% sucrose.

Reconstitution & Storage

Add 50 ul of distilled water. Final anti-FAM120A antibody concentration is 1 mg/ml in PBS buffer with 2% sucrose. For longer periods of storage, store at 20°C. Avoid repeat freeze-thaw cycles.

Precautions

FAM120A antibody - middle region is for research use only and not for use in diagnostic or therapeutic procedures.

FAM120A antibody - middle region - Protein Information**Name** FAM120A**Function**Component of the oxidative stress-induced survival signaling. May regulate the activation of SRC family protein kinases (PubMed:[19015244](http://www.uniprot.org/citations/19015244)). May act as a scaffolding protein enabling SRC family protein kinases to phosphorylate and activate PI3-kinase (PubMed:[19015244](http://www.uniprot.org/citations/19015244)). Binds IGF2 RNA and promotes the production of IGF2 protein (PubMed:[19015244](http://www.uniprot.org/citations/19015244)).

<http://www.uniprot.org/citations/19015244>

Cellular Location

Cytoplasm. Cell membrane; Peripheral membrane protein; Cytoplasmic side. Note=Translocates from the cytosol to plasma membrane after UV irradiation.

Tissue Location

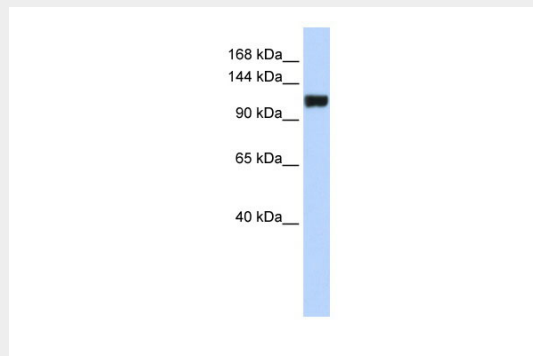
Widely expressed (PubMed:14585507). In gastric mucosa, detected in the bottom region of the foveolar epithelium (at protein level) (PubMed:19015244).

FAM120A antibody - middle region - Protocols

Provided below are standard protocols that you may find useful for product applications.

- [Western Blot](#)
- [Blocking Peptides](#)
- [Dot Blot](#)
- [Immunohistochemistry](#)
- [Immunofluorescence](#)
- [Immunoprecipitation](#)
- [Flow Cytometry](#)
- [Cell Culture](#)

FAM120A antibody - middle region - Images

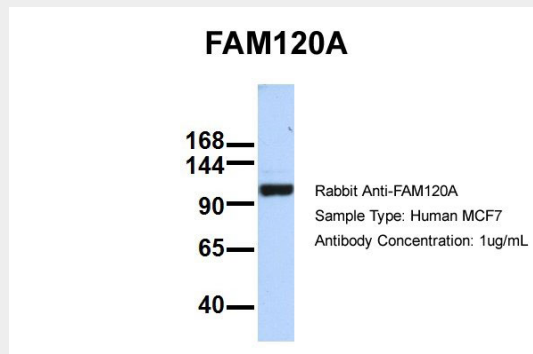


WB Suggested Anti-FAM120A Antibody Titration: 0.2-1 μ g/ml

ELISA Titer: 1:312500

Positive Control: MCF7 cell lysate

.FAM120A is strongly supported by BioGPS gene expression data to be expressed in MCF7

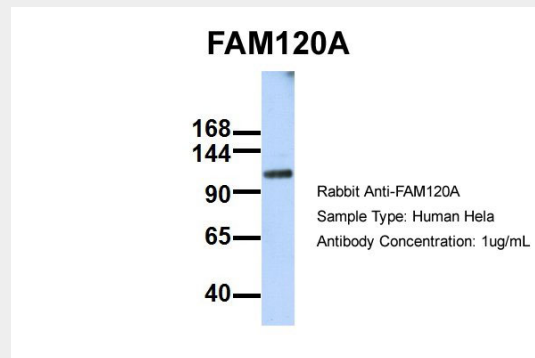


Host: Rabbit

Target Name: FAM120A

Sample Tissue: MCF7

Antibody Dilution: 1.0µg/ml FAM120A is strongly supported by BioGPS gene expression data to be expressed in MCF7

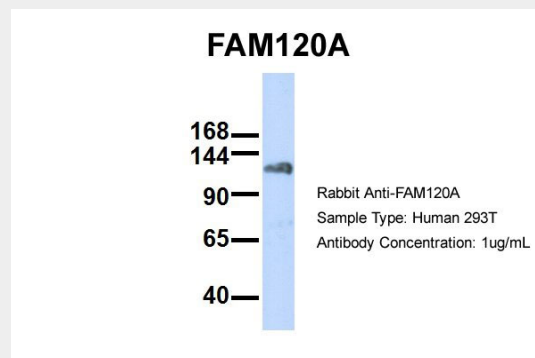


Host: Rabbit

Target Name: FAM120A

Sample Tissue: HeLa

Antibody Dilution: 1.0µg/ml FAM120A is strongly supported by BioGPS gene expression data to be expressed in Human HeLa cells



Host: Rabbit

Target Name: FAM120A

Sample Tissue: 293T

Antibody Dilution: 1.0µg/ml

FAM120A antibody - middle region - References

Brahmbhatt S.B.,et al.Submitted (NOV-1999) to the EMBL/GenBank/DDBJ databases.

Humphray S.J.,et al.Nature 429:369-374(2004).

Nagase T.,et al.DNA Res. 3:17-24(1996).

Ohara O.,et al.Submitted (JUN-2005) to the EMBL/GenBank/DDBJ databases.

Holden S.,et al.Gene 318:149-161(2003).