

**HOOK2 Antibody - middle region**  
**Rabbit Polyclonal Antibody**  
**Catalog # AI13716****Specification**

---

**HOOK2 Antibody - middle region - Product Information**

Application	WB
Primary Accession	<a href="#">O96ED9</a>
Reactivity	Human
Predicted	Human, Mouse, Rat, Pig, Horse, Bovine, Guinea Pig, Dog
Host	Rabbit
Clonality	Polyclonal
Calculated MW	79kDa KDa

**HOOK2 Antibody - middle region - Additional Information****Gene ID** 29911**Alias Symbol** HOOK2,  
**Other Names**  
Protein Hook homolog 2, h-hook2, hHK2, HOOK2**Format**

Liquid. Purified antibody supplied in 1x PBS buffer with 0.09% (w/v) sodium azide and 2% sucrose.

**Reconstitution & Storage**

Add 50 µl of distilled water. Final Anti-HOOK2 antibody concentration is 1 mg/ml in PBS buffer with 2% sucrose. For longer periods of storage, store at -20°C. Avoid repeat freeze-thaw cycles.

**Precautions**

HOOK2 Antibody - middle region is for research use only and not for use in diagnostic or therapeutic procedures.

**HOOK2 Antibody - middle region - Protein Information****Name** HOOK2**Function**

Component of the FTS/Hook/FHIP complex (FHF complex). The FHF complex may function to promote vesicle trafficking and/or fusion via the homotypic vesicular protein sorting complex (the HOPS complex). Contributes to the establishment and maintenance of centrosome function. May function in the positioning or formation of aggresomes, which are pericentriolar accumulations of misfolded proteins, proteasomes and chaperones. FHF complex promotes the distribution of AP-4 complex to the perinuclear area of the cell (PubMed:&lt;a href="http://www.uniprot.org/citations/32073997" target="\_blank"&gt;32073997&lt;/a&gt;).

**Cellular Location**

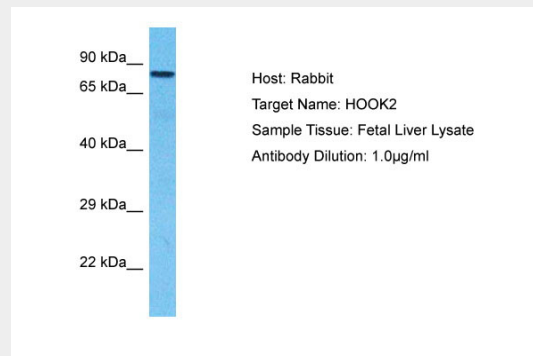
Cytoplasm, cytoskeleton, microtubule organizing center, centrosome. Cytoplasm. Cytoplasm, cytoskeleton {ECO:0000250|UniProtKB:Q7TMK6}. Golgi apparatus, trans-Golgi network. Note=Colocalizes with aggresomes, which are aggregates of misfolded proteins, at the centrosome (PubMed:17540036). Also localizes to punctate cytoplasmic foci which do not appear to overlap with early or late endosomes, the endoplasmic reticulum, multivesicular bodies (MVBs), lysosome, or mitochondria (PubMed:17540036, PubMed:32073997). Often found in close association with microtubules (PubMed:17540036). Localizes to the manchette in elongating spermatids (By similarity). {ECO:0000250|UniProtKB:Q7TMK6, ECO:0000269|PubMed:17540036, ECO:0000269|PubMed:32073997}

## HOOK2 Antibody - middle region - Protocols

Provided below are standard protocols that you may find useful for product applications.

- [Western Blot](#)
- [Blocking Peptides](#)
- [Dot Blot](#)
- [Immunohistochemistry](#)
- [Immunofluorescence](#)
- [Immunoprecipitation](#)
- [Flow Cytometry](#)
- [Cell Culture](#)

## HOOK2 Antibody - middle region - Images



Host: Rabbit  
Target Name: HOOK2  
Sample Tissue: Fetal Liver lysates  
Antibody Dilution: 1.0µg/ml

## HOOK2 Antibody - middle region - References

Kraemer H., et al. Genetics 151:675-684(1999).  
Grimwood J., et al. Nature 428:529-535(2004).  
Walenta J.H., et al. J. Cell Biol. 152:923-934(2001).  
Szebenyi G., et al. BMC Cell Biol. 8:19-19(2007).  
Szebenyi G., et al. Traffic 8:32-46(2007).