

**RAPGEF1 antibody - C-terminal region**  
**Rabbit Polyclonal Antibody**  
**Catalog # AI13683**

**Specification**

---

**RAPGEF1 antibody - C-terminal region - Product Information**

Application	WB
Primary Accession	<a href="#">Q13905</a>
Other Accession	<a href="#">NM_005312</a> , <a href="#">NP_005303</a>
Reactivity	Human, Mouse, Rat, Pig, Horse, Bovine, Guinea Pig, Dog
Predicted	Human, Mouse, Rat, Pig, Chicken, Horse, Bovine, Guinea Pig, Dog
Host	Rabbit
Clonality	Polyclonal
Calculated MW	120kDa KDa

**RAPGEF1 antibody - C-terminal region - Additional Information**

**Gene ID** 2889

**Alias Symbol** C3G, DKFZp781P1719, GRF2

**Other Names**

Rap guanine nucleotide exchange factor 1, CRK SH3-binding GNRP, Guanine nucleotide-releasing factor 2, Protein C3G, RAPGEF1, GRF2

**Format**

Liquid. Purified antibody supplied in 1x PBS buffer with 0.09% (w/v) sodium azide and 2% sucrose.

**Reconstitution & Storage**

Add 50 ul of distilled water. Final anti-RAPGEF1 antibody concentration is 1 mg/ml in PBS buffer with 2% sucrose. For longer periods of storage, store at 20°C. Avoid repeat freeze-thaw cycles.

**Precautions**

RAPGEF1 antibody - C-terminal region is for research use only and not for use in diagnostic or therapeutic procedures.

**RAPGEF1 antibody - C-terminal region - Protein Information**

**Name** RAPGEF1

**Synonyms** GRF2

**Function**

Guanine nucleotide-releasing protein that binds to SH3 domain of CRK and GRB2/ASH. Transduces signals from CRK to activate RAS. Involved in cell branching and adhesion mediated by BCAR1-CRK-RAPGEF1 signaling and activation of RAP1 (PubMed:<a href="http://www.uniprot.org/citations/12432078" target="\_blank">12432078</a>). Plays a role

in the establishment of basal endothelial barrier function. Plays a role in nerve growth factor (NGF)-induced sustained activation of Rap1 and neurite outgrowth.

#### Cellular Location

Early endosome.

#### Tissue Location

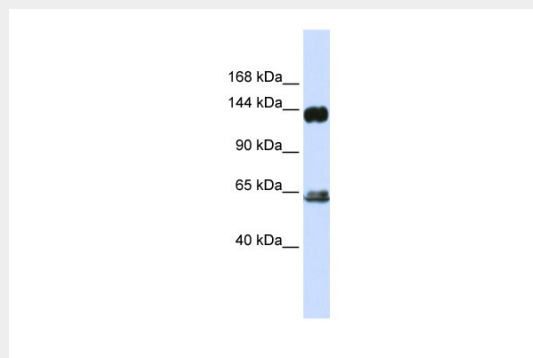
Ubiquitously expressed in adult and fetus. Expression is high in adult skeletal muscle and placenta and in fetal brain and heart. Low levels of expression in adult and fetal liver

### RAPGEF1 antibody - C-terminal region - Protocols

Provided below are standard protocols that you may find useful for product applications.

- [Western Blot](#)
- [Blocking Peptides](#)
- [Dot Blot](#)
- [Immunohistochemistry](#)
- [Immunofluorescence](#)
- [Immunoprecipitation](#)
- [Flow Cytometry](#)
- [Cell Culture](#)

### RAPGEF1 antibody - C-terminal region - Images



WB Suggested Anti-RAPGEF1 Antibody Titration: 0.2-1  $\mu\text{g/ml}$

ELISA Titer: 1:312500

Positive Control: Human brain

### RAPGEF1 antibody - C-terminal region - References

- Tanaka S., et al. Proc. Natl. Acad. Sci. U.S.A. 91:3443-3447(1994).  
Knudsen B., et al. J. Biol. Chem. 269:32781-32787(1994).  
Bechtel S., et al. BMC Genomics 8:399-399(2007).  
Humphray S.J., et al. Nature 429:369-374(2004).  
Matsuda M., et al. J. Biol. Chem. 271:14468-14472(1996).