

**IDI1 antibody - middle region**  
**Rabbit Polyclonal Antibody**  
**Catalog # AI13678****Specification**

---

**IDI1 antibody - middle region - Product Information**

Application	WB
Primary Accession	<a href="#">Q13907</a>
Other Accession	<a href="#">NM_004508</a> , <a href="#">NP_004499</a>
Reactivity	Human, Mouse, Rat, Rabbit, Horse, Bovine, Guinea Pig, Dog
Predicted	Human, Mouse, Rat, Chicken, Horse, Bovine, Guinea Pig
Host	Rabbit
Clonality	Polyclonal
Calculated MW	32kDa kDa

**IDI1 antibody - middle region - Additional Information****Gene ID** 3422**Alias Symbol** **IPP1, IPPI1****Other Names**

Isopentenyl-diphosphate Delta-isomerase 1, 5.3.3.2, Isopentenyl pyrophosphate isomerase 1, IPP isomerase 1, IPPI1, IDI1

**Format**

Liquid. Purified antibody supplied in 1x PBS buffer with 0.09% (w/v) sodium azide and 2% sucrose.

**Reconstitution & Storage**

Add 50 ul of distilled water. Final anti-IDI1 antibody concentration is 1 mg/ml in PBS buffer with 2% sucrose. For longer periods of storage, store at 20°C. Avoid repeat freeze-thaw cycles.

**Precautions**

IDI1 antibody - middle region is for research use only and not for use in diagnostic or therapeutic procedures.

**IDI1 antibody - middle region - Protein Information****Name** IDI1**Function**

Catalyzes the 1,3-allylic rearrangement of the homoallylic substrate isopentenyl (IPP) to its highly electrophilic allylic isomer, dimethylallyl diphosphate (DMAPP).

**Cellular Location**

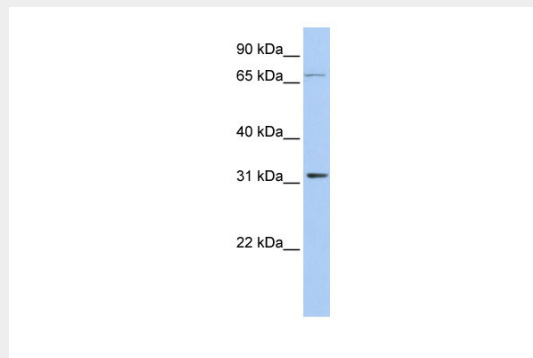
Peroxisome {ECO:0000250|UniProtKB:O35586}.

## IDI1 antibody - middle region - Protocols

Provided below are standard protocols that you may find useful for product applications.

- [Western Blot](#)
- [Blocking Peptides](#)
- [Dot Blot](#)
- [Immunohistochemistry](#)
- [Immunofluorescence](#)
- [Immunoprecipitation](#)
- [Flow Cytometry](#)
- [Cell Culture](#)

## IDI1 antibody - middle region - Images



WB Suggested Anti-IDI1 Antibody Titration: 0.2-1  $\mu$ g/ml  
ELISA Titer: 1:1562500  
Positive Control: Hela cell lysate

## IDI1 antibody - middle region - References

Xuan J.W., et al. Genomics 20:129-131(1994).  
Masuda K., et al. Submitted (AUG-2000) to the EMBL/GenBank/DDBJ databases.  
Masuda K., et al. Submitted (MAY-2000) to the EMBL/GenBank/DDBJ databases.  
Kalnine N., et al. Submitted (MAY-2003) to the EMBL/GenBank/DDBJ databases.  
Ota T., et al. Nat. Genet. 36:40-45(2004).