

TRAK1 antibody - middle region
Rabbit Polyclonal Antibody
Catalog # AI13660**Specification**

TRAK1 antibody - middle region - Product Information

Application	WB
Primary Accession	O9UPV9
Other Accession	NM_001042646 , NP_001036111
Reactivity	Human, Rat, Rabbit, Pig, Horse, Bovine, Dog
Predicted	Human, Rat, Rabbit, Pig, Chicken, Horse, Bovine, Dog
Host	Rabbit
Clonality	Polyclonal
Calculated MW	106kDa KDa

TRAK1 antibody - middle region - Additional Information**Gene ID** 22906**Alias Symbol** OIP106, MILT1**Other Names**

Trafficking kinesin-binding protein 1, 106 kDa O-GlcNAc transferase-interacting protein, TRAK1, KIAA1042, OIP106

Format

Liquid. Purified antibody supplied in 1x PBS buffer with 0.09% (w/v) sodium azide and 2% sucrose.

Reconstitution & Storage

Add 50 ul of distilled water. Final anti-TRAK1 antibody concentration is 1 mg/ml in PBS buffer with 2% sucrose. For longer periods of storage, store at 20°C. Avoid repeat freeze-thaw cycles.

Precautions

TRAK1 antibody - middle region is for research use only and not for use in diagnostic or therapeutic procedures.

TRAK1 antibody - middle region - Protein Information**Name** TRAK1**Synonyms** KIAA1042, OIP106**Function**

Involved in the regulation of endosome-to-lysosome trafficking, including endocytic trafficking of EGF-EGFR complexes and GABA-A receptors (PubMed:18675823). Involved in mitochondrial motility. When O-glycosylated, abolishes mitochondrial motility. Crucial for

recruiting OGT to the mitochondrial surface of neuronal processes (PubMed:24995978). TRAK1 and RHOT form an essential protein complex that links KIF5 to mitochondria for light chain-independent, anterograde transport of mitochondria (By similarity).

Cellular Location

Cytoplasm. Nucleus. Mitochondrion. Early endosome. Endosome. Mitochondrion membrane. Cytoplasm, cell cortex {ECO:0000250|UniProtKB:Q6PD31}. Note=Predominantly associated with early endosome. The localization to early endosomes depends on its interaction with HGS/HRS (PubMed:18675823). Colocalizes with MGARP at the mitochondria (PubMed:19528298).

Tissue Location

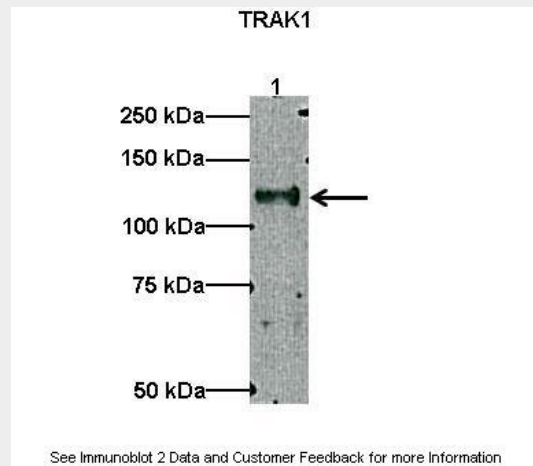
High expression in spinal cord and moderate expression in all other tissues and specific brain regions examined Expressed in all cell lines examined.

TRAK1 antibody - middle region - Protocols

Provided below are standard protocols that you may find useful for product applications.

- [Western Blot](#)
- [Blocking Peptides](#)
- [Dot Blot](#)
- [Immunohistochemistry](#)
- [Immunofluorescence](#)
- [Immunoprecipitation](#)
- [Flow Cytometry](#)
- [Cell Culture](#)

TRAK1 antibody - middle region - Images



Lanes: Lane1: 10 ug myc-hTRAK1 transfected HEK293 lysate
Primary Antibody Dilution: 1:500
Secondary Antibody: Anti-rabbit HRP
Secondary Antibody Dilution: 1:2000
Gene Name: TRAK1
Submitted by: Gulcin Pekkurnaz, F.M. Kirby Neurobiology Center

TRAK1 antibody - middle region - References

Kikuno R., et al. DNA Res. 6:197-205(1999).

Bechtel S.,et al.BMC Genomics 8:399-399(2007).
Muzny D.M.,et al.Nature 440:1194-1198(2006).
Iyer S.P.N.,et al.J. Biol. Chem. 278:5399-5409(2003).
Brickley K.,et al.J. Biol. Chem. 280:14723-14732(2005).