

TRAK1 antibody - middle region
Rabbit Polyclonal Antibody
Catalog # AI13659**Specification**

TRAK1 antibody - middle region - Product Information

Application	WB
Primary Accession	O9UPV9
Other Accession	NM_001042646 , NP_001036111
Reactivity	Human, Mouse, Rat, Rabbit, Pig, Horse, Yeast, Bovine, Guinea Pig, Dog
Predicted	Human, Mouse, Rat, Rabbit, Chicken, Horse, Bovine, Guinea Pig, Dog
Host	Rabbit
Clonality	Polyclonal
Calculated MW	106kDa KDa

TRAK1 antibody - middle region - Additional Information**Gene ID** 22906**Alias Symbol** OIP106, MILT1**Other Names**

Trafficking kinesin-binding protein 1, 106 kDa O-GlcNAc transferase-interacting protein, TRAK1, KIAA1042, OIP106

Format

Liquid. Purified antibody supplied in 1x PBS buffer with 0.09% (w/v) sodium azide and 2% sucrose.

Reconstitution & Storage

Add 50 ul of distilled water. Final anti-TRAK1 antibody concentration is 1 mg/ml in PBS buffer with 2% sucrose. For longer periods of storage, store at 20°C. Avoid repeat freeze-thaw cycles.

Precautions

TRAK1 antibody - middle region is for research use only and not for use in diagnostic or therapeutic procedures.

TRAK1 antibody - middle region - Protein Information**Name** TRAK1**Synonyms** KIAA1042, OIP106**Function**

Involved in the regulation of endosome-to-lysosome trafficking, including endocytic trafficking of EGF-EGFR complexes and GABA-A receptors (PubMed:18675823). Involved in mitochondrial motility. When O-glycosylated, abolishes mitochondrial motility. Crucial for

recruiting OGT to the mitochondrial surface of neuronal processes (PubMed:24995978). TRAK1 and RHOT form an essential protein complex that links KIF5 to mitochondria for light chain-independent, anterograde transport of mitochondria (By similarity).

Cellular Location

Cytoplasm. Nucleus. Mitochondrion. Early endosome. Endosome. Mitochondrion membrane. Cytoplasm, cell cortex {ECO:0000250|UniProtKB:Q6PD31}. Note=Predominantly associated with early endosome. The localization to early endosomes depends on its interaction with HGS/HRS (PubMed:18675823). Colocalizes with MGARP at the mitochondria (PubMed:19528298).

Tissue Location

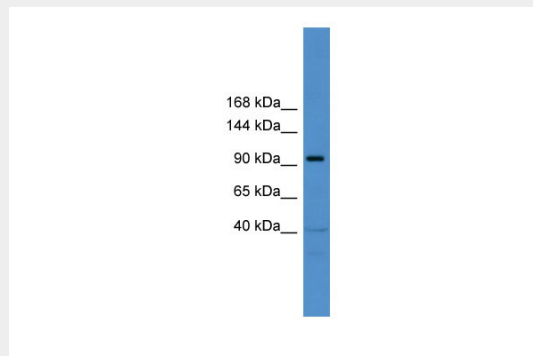
High expression in spinal cord and moderate expression in all other tissues and specific brain regions examined Expressed in all cell lines examined.

TRAK1 antibody - middle region - Protocols

Provided below are standard protocols that you may find useful for product applications.

- [Western Blot](#)
- [Blocking Peptides](#)
- [Dot Blot](#)
- [Immunohistochemistry](#)
- [Immunofluorescence](#)
- [Immunoprecipitation](#)
- [Flow Cytometry](#)
- [Cell Culture](#)

TRAK1 antibody - middle region - Images



WB Suggested Anti-TRAK1 Antibody Titration: 0.2-1 µg/ml

ELISA Titer: 1:62500

Positive Control: HT1080 cell lysate

There is BioGPS gene expression data showing that TRAK1 is expressed in HT1080

TRAK1 antibody - middle region - References

- Kikuno R., et al. DNA Res. 6:197-205(1999).
Bechtel S., et al. BMC Genomics 8:399-399(2007).
Muzny D.M., et al. Nature 440:1194-1198(2006).
Iyer S.P.N., et al. J. Biol. Chem. 278:5399-5409(2003).
Brickley K., et al. J. Biol. Chem. 280:14723-14732(2005).