

GTF2A1L antibody - C-terminal region
Rabbit Polyclonal Antibody
Catalog # AI13627

Specification

GTF2A1L antibody - C-terminal region - Product Information

Application	WB
Primary Accession	O9UNN4
Other Accession	NM_172196 , NP_751946
Reactivity	Human, Mouse, Rat, Horse, Bovine, Dog
Predicted	Human, Rat, Bovine, Dog
Host	Rabbit
Clonality	Polyclonal
Calculated MW	49kDa KDa

GTF2A1L antibody - C-terminal region - Additional Information

Gene ID 11036

Alias Symbol ALF, MGC26254

Other Names

TFIIA-alpha and beta-like factor, General transcription factor II A, 1-like factor, GTF2A1L, ALF, GTF2A1LF

Format

Liquid. Purified antibody supplied in 1x PBS buffer with 0.09% (w/v) sodium azide and 2% sucrose.

Reconstitution & Storage

Add 50 ul of distilled water. Final anti-GTF2A1L antibody concentration is 1 mg/ml in PBS buffer with 2% sucrose. For longer periods of storage, store at 20°C. Avoid repeat freeze-thaw cycles.

Precautions

GTF2A1L antibody - C-terminal region is for research use only and not for use in diagnostic or therapeutic procedures.

GTF2A1L antibody - C-terminal region - Protein Information

Name GTF2A1L

Synonyms ALF, GTF2A1LF

Function

May function as a testis specific transcription factor. Binds DNA in conjunction with GTF2A2 and TBP (the TATA-binding protein) and together with GTF2A2, allows mRNA transcription.

Cellular Location

Nucleus. Note=Mainly localizes in the annulus and partly in acrosomal cap area of spermatozoa

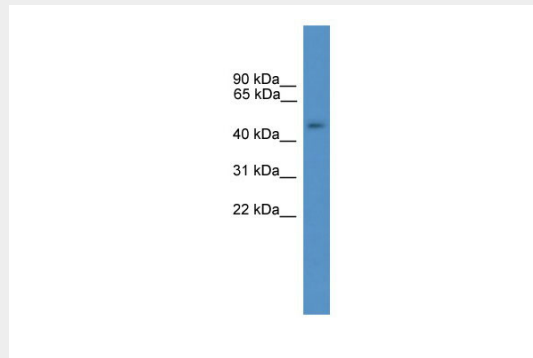
Tissue Location

Testis specific. Detected in adult testis mostly in round and elongating spermatids (at protein level). Detected in testis

GTF2A1L antibody - C-terminal region - Protocols

Provided below are standard protocols that you may find useful for product applications.

- [Western Blot](#)
- [Blocking Peptides](#)
- [Dot Blot](#)
- [Immunohistochemistry](#)
- [Immunofluorescence](#)
- [Immunoprecipitation](#)
- [Flow Cytometry](#)
- [Cell Culture](#)

GTF2A1L antibody - C-terminal region - Images

WB Suggested Anti-GTF2A1L Antibody Titration: 0.2-1 μ g/ml

ELISA Titer: 1:62500

Positive Control: Human Placenta