

SPA17 antibody - N-terminal region
Rabbit Polyclonal Antibody
Catalog # AI13607

Specification

SPA17 antibody - N-terminal region - Product Information

Application	WB
Primary Accession	Q15506
Other Accession	NM_017425 , NP_059121
Reactivity	Human, Mouse, Rat, Rabbit, Pig, Sheep, Horse, Bovine, Guinea Pig, Dog
Predicted	Human, Mouse, Rat, Pig, Bovine, Guinea Pig
Host	Rabbit
Clonality	Polyclonal
Calculated MW	17kDa KDa

SPA17 antibody - N-terminal region - Additional Information

Gene ID 53340

Alias Symbol SP17, SP17-1, CT22

Other Names

Sperm surface protein Sp17, Cancer/testis antigen 22, CT22, Sp17-1, Sperm autoantigenic protein 17, Sperm protein 17, SPA17, SP17

Format

Liquid. Purified antibody supplied in 1x PBS buffer with 0.09% (w/v) sodium azide and 2% sucrose.

Reconstitution & Storage

Add 50 ul of distilled water. Final anti-SPA17 antibody concentration is 1 mg/ml in PBS buffer with 2% sucrose. For longer periods of storage, store at 20°C. Avoid repeat freeze-thaw cycles.

Precautions

SPA17 antibody - N-terminal region is for research use only and not for use in diagnostic or therapeutic procedures.

SPA17 antibody - N-terminal region - Protein Information

Name SPA17

Synonyms SP17

Function

Sperm surface zona pellucida binding protein. Helps to bind spermatozoa to the zona pellucida with high affinity. Might function in binding zona pellucida and carbohydrates (By similarity).

Cellular Location

Membrane; Peripheral membrane protein

Tissue Location

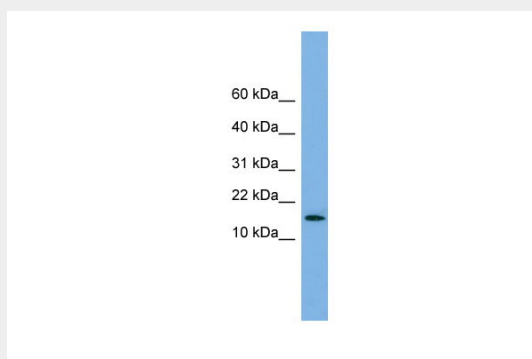
Testis and sperm specific.

SPA17 antibody - N-terminal region - Protocols

Provided below are standard protocols that you may find useful for product applications.

- [Western Blot](#)
- [Blocking Peptides](#)
- [Dot Blot](#)
- [Immunohistochemistry](#)
- [Immunofluorescence](#)
- [Immunoprecipitation](#)
- [Flow Cytometry](#)
- [Cell Culture](#)

SPA17 antibody - N-terminal region - Images



WB Suggested Anti-SPA17 Antibody Titration: 0.2-1 μ g/ml

ELISA Titer: 1:1562500

Positive Control: Human heart

SPA17 antibody - N-terminal region - References

Lea I.A., et al. *Biochim. Biophys. Acta* 1307:263-266(1996).

Buchli R., et al. *Biochim. Biophys. Acta* 1578:29-42(2002).

Ota T., et al. *Nat. Genet.* 36:40-45(2004).

Mural R.J., et al. Submitted (JUL-2005) to the EMBL/GenBank/DDBJ databases.

Li Z., et al. *Int. J. Cancer* 121:1507-1511(2007).