

**LDHC antibody - middle region**  
**Rabbit Polyclonal Antibody**  
**Catalog # AI13584****Specification**

---

**LDHC antibody - middle region - Product Information**

Application	<b>WB</b>
Primary Accession	<a href="#">P07864</a>
Other Accession	<a href="#">NM_002301</a> , <a href="#">NP_002292</a>
Reactivity	<b>Human, Mouse, Rat, Rabbit, Pig, Goat, Horse, Bovine, Guinea Pig, Dog</b>
Predicted	<b>Human, Mouse, Rat, Rabbit, Pig, Bovine, Dog</b>
Host	<b>Rabbit</b>
Clonality	<b>Polyclonal</b>
Calculated MW	<b>36kDa KDa</b>

**LDHC antibody - middle region - Additional Information****Gene ID** 3948**Alias Symbol** **LDH3, LDHX, MGC111073, CT32****Other Names**

L-lactate dehydrogenase C chain, LDH-C, 1.1.1.27, Cancer/testis antigen 32, CT32, LDH testis subunit, LDH-X, LDHC, LDH3, LDHX

**Format**

Liquid. Purified antibody supplied in 1x PBS buffer with 0.09% (w/v) sodium azide and 2% sucrose.

**Reconstitution & Storage**

Add 50 ul of distilled water. Final anti-LDHC antibody concentration is 1 mg/ml in PBS buffer with 2% sucrose. For longer periods of storage, store at 20°C. Avoid repeat freeze-thaw cycles.

**Precautions**

LDHC antibody - middle region is for research use only and not for use in diagnostic or therapeutic procedures.

**LDHC antibody - middle region - Protein Information****Name** LDHC**Synonyms** LDH3, LDHX**Function**

Possible role in sperm motility.

**Cellular Location**

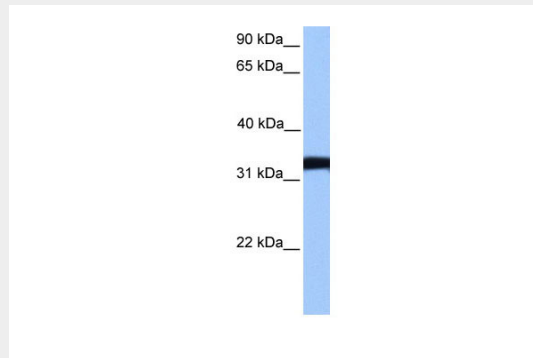
Cytoplasm.

## LDHC antibody - middle region - Protocols

Provided below are standard protocols that you may find useful for product applications.

- [Western Blot](#)
- [Blocking Peptides](#)
- [Dot Blot](#)
- [Immunohistochemistry](#)
- [Immunofluorescence](#)
- [Immunoprecipitation](#)
- [Flow Cytometry](#)
- [Cell Culture](#)

## LDHC antibody - middle region - Images



WB Suggested Anti-LDHC Antibody Titration: 0.2-1  $\mu\text{g/ml}$   
Positive Control: NTERA2 cell lysate

## LDHC antibody - middle region - References

Millan J.L., et al. Proc. Natl. Acad. Sci. U.S.A. 84:5311-5315(1987).  
Takano T., et al. Biochem. Biophys. Res. Commun. 159:579-583(1989).  
Wu K., et al. J. Genet. Mol. Biol. 1:72-76(1990).  
Wang H., et al. J. Mol. Med. 82:317-324(2004).  
Mural R.J., et al. Submitted (SEP-2005) to the EMBL/GenBank/DDBJ databases.