

**ADAM2 antibody - middle region**  
**Rabbit Polyclonal Antibody**  
**Catalog # AI13582****Specification**

---

**ADAM2 antibody - middle region - Product Information**

Application	<b>WB</b>
Primary Accession	<a href="#">O99965</a>
Other Accession	<a href="#">NM_001464</a> , <a href="#">NP_001455</a>
Reactivity	<b>Human</b>
Predicted	<b>Human</b>
Host	<b>Rabbit</b>
Clonality	<b>Polyclonal</b>
Calculated MW	<b>81kDa KDa</b>

**ADAM2 antibody - middle region - Additional Information****Gene ID 2515**

Alias Symbol **CRYN1, CRYN2, FTNB, PH-30b, PH30, CT15**  
**Other Names**

Disintegrin and metalloproteinase domain-containing protein 2, ADAM 2, Cancer/testis antigen 15, CT15, Fertilin subunit beta, PH-30, PH30, PH30-beta, ADAM2, FTNB

**Format**

Liquid. Purified antibody supplied in 1x PBS buffer with 0.09% (w/v) sodium azide and 2% sucrose.

**Reconstitution & Storage**

Add 50 ul of distilled water. Final anti-ADAM2 antibody concentration is 1 mg/ml in PBS buffer with 2% sucrose. For longer periods of storage, store at 20°C. Avoid repeat freeze-thaw cycles.

**Precautions**

ADAM2 antibody - middle region is for research use only and not for use in diagnostic or therapeutic procedures.

**ADAM2 antibody - middle region - Protein Information**

**Name** ADAM2

**Synonyms** FTNB

**Function**

Sperm surface membrane protein that may be involved in sperm- egg plasma membrane adhesion and fusion during fertilization. Could have a direct role in sperm-zona binding or migration of sperm from the uterus into the oviduct. Interactions with egg membrane could be mediated via binding between its disintegrin-like domain to one or more integrins receptors on the egg. This is a non catalytic metalloprotease-like protein.

### Cellular Location

Membrane; Single-pass type I membrane protein.

### Tissue Location

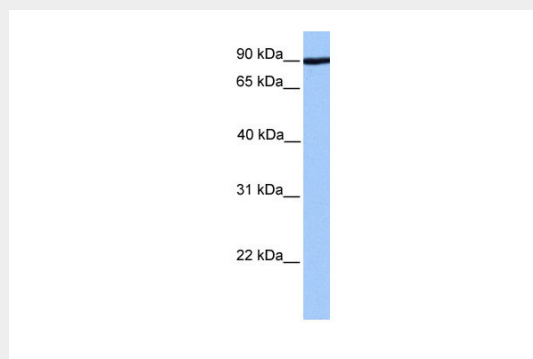
Expressed specifically in spermatogenic cells in the seminiferous cells. Not detected in fetal tissues

### ADAM2 antibody - middle region - Protocols

Provided below are standard protocols that you may find useful for product applications.

- [Western Blot](#)
- [Blocking Peptides](#)
- [Dot Blot](#)
- [Immunohistochemistry](#)
- [Immunofluorescence](#)
- [Immunoprecipitation](#)
- [Flow Cytometry](#)
- [Cell Culture](#)

### ADAM2 antibody - middle region - Images



WB Suggested Anti-ADAM2 Antibody Titration: 0.2-1  $\mu\text{g/ml}$   
Positive Control: 721\_B cell lysate

### ADAM2 antibody - middle region - References

- Vidaeus C.M., et al. Mol. Reprod. Dev. 46:363-369(1997).  
Gupta S.K., et al. Biochem. Biophys. Res. Commun. 224:318-326(1996).  
Burkin H.R., et al. Genomics 40:190-192(1997).  
Hall L., et al. Submitted (APR-1999) to the EMBL/GenBank/DDBJ databases.